



**OLEJNIK PROFESSIONAL**

# DECORATIVE VENETIAN TOOLS



**JOIN US IN SOCIAL MEDIA**

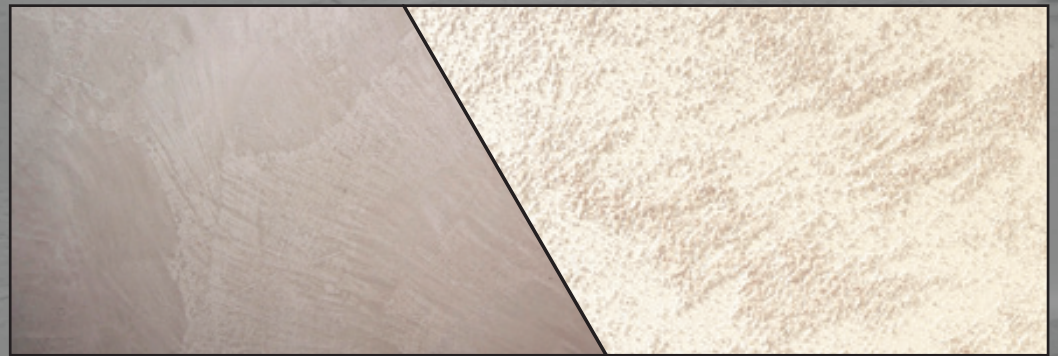
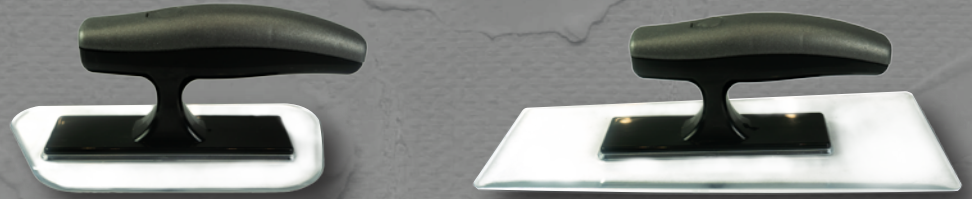


# TROWELS SPATULAS &

## Plastic trowels

Trapezoidal and special shaped plastic trowel. Suitable for applying resins, decorative plasters, and other fine finishes.

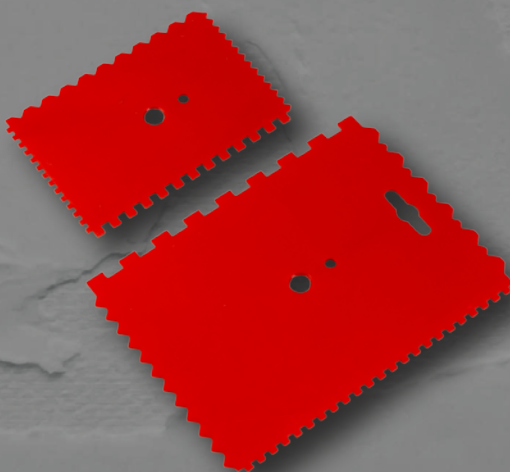
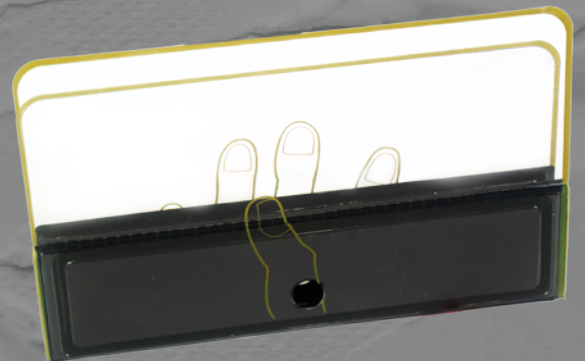
- Lightweight and durable construction for extended use
- Provides excellent control and precision
- Reduces hand fatigue with ergonomic handle design
- Perfect for both professional and DIY projects



## Plastic spatula

The plastic spatula is designed for creating decorative effects on smooth silk and pearlescent paints. This tool is perfect for both professionals and enthusiasts aiming to achieve high-quality results in their projects.

- Lightweight and durable material for extended use
- Ergonomic design for comfortable handling
- Ideal for creating decorative effects



## Tool for applying tile adhesive

This versatile tool is ideal for applying tile adhesive in a wide range of thicknesses, thin-layer mortar, and many other fillers. The high-quality PS material ensures professional results and long-lasting durability.

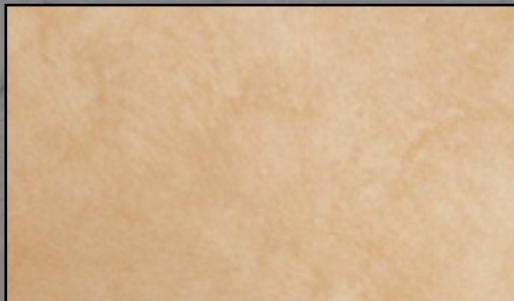
- Artistic Effects: Four different tooth shapes allow for creative effects in artistic projects.
- Essential Tool: A must-have for craftsmen and DIY enthusiasts.



## Plastic applicator

The Classic Spalter Brush is an essential tool for both professional artists and DIY enthusiasts. This high-quality brush is crafted with meticulous attention to detail, combining traditional craftsmanship with modern materials to deliver superior performance and durability.

### Example of effect



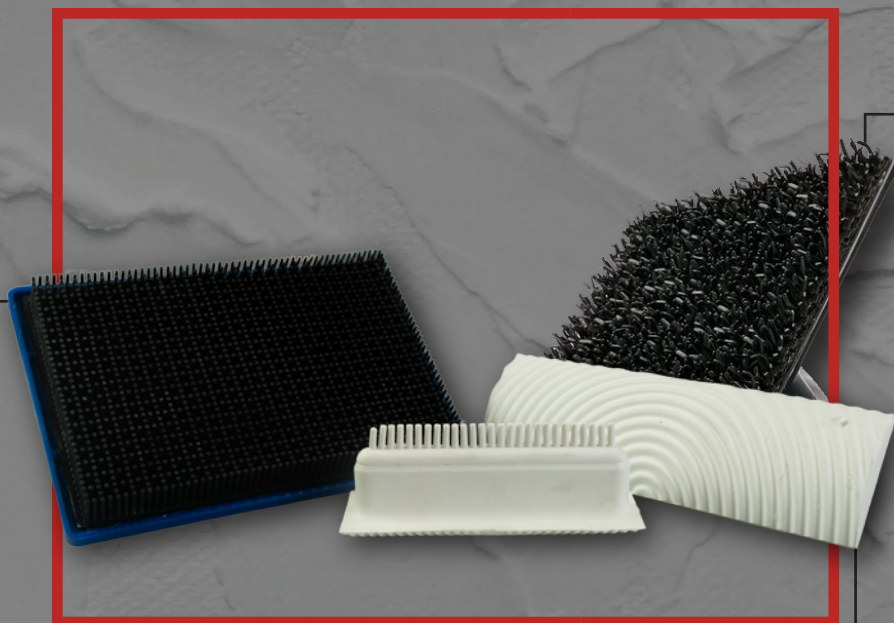
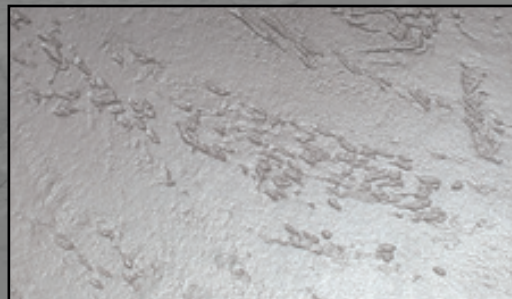
# APPLICATORS BRUSHES &



## Plastic applicator

This versatile stipple brush is the perfect tool for creating textured finishes on walls and ceilings. Whether you're working with paint, this stippling hand tool ensures professional results every time. Its ergonomic dowel handle offers a comfortable grip, making it easy to use for extended periods.

### Example of effect



## Brush-Spatula

The Decorative Material Brush-Spatula is a specialized tool designed to create the "1000 lines" effect. Ideal for both professional decorators and DIY enthusiasts, this brush-spatula allows for unique and intricate texturing on various surfaces, enhancing the aesthetic appeal of your projects.

### Example of effect



### Example of effect



## Plastic applicator

This plastic applicator is designed for creating the texture of natural wood grain. Perfect for DIY enthusiasts and professionals alike. Whether you're working on furniture, walls, or decorative pieces, this wood grain tool adds a touch of nature to your projects.



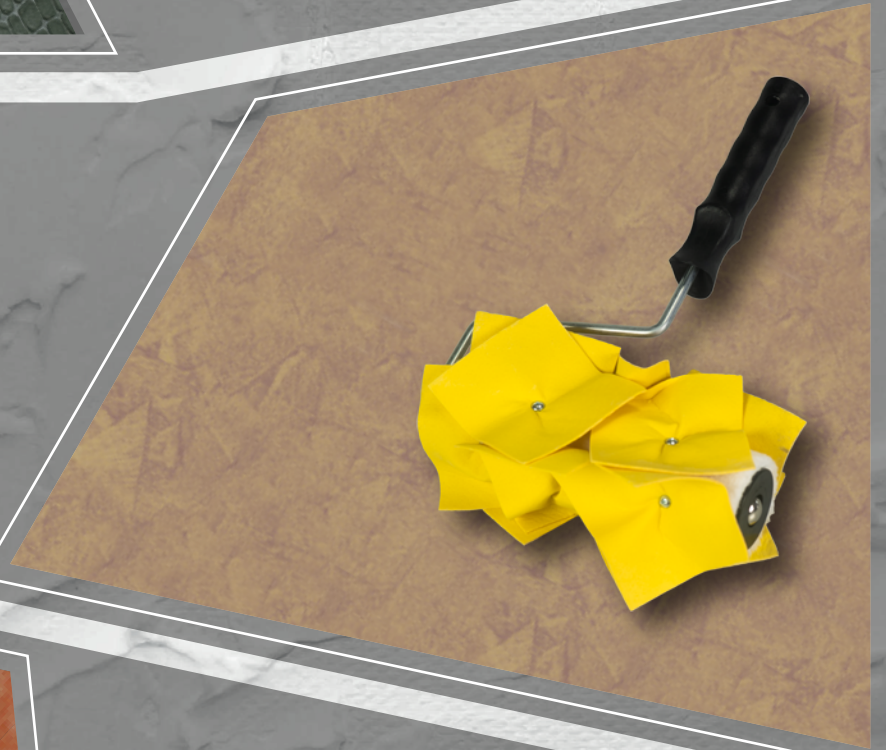
# CROCODILE SKIN TEXTURE ROLLER

Roller for applying decorative crocodile skin texture. Made of plastic, it has a diameter of 8 mm and a width of 180 mm, providing ease of use and even pattern distribution.



# CREOS ROLLER

A decorative roller with bright yellow folds secured by screws, designed for creating unique textures on walls. The ergonomic handle ensures comfort and ease of use. Roller size: 200 mm.



# GLAZING ROLLER

This decorative roller features a white, soft fabric cover designed to create subtle, textured patterns on walls. The ergonomic handle ensures comfort and ease of use. Roller size: 200 mm.



# MOOD ROLLER

This decorative roller features a non-replaceable roller with an 8 mm diameter and a length of 200 mm. The black textured surface is designed to create distinct, embossed patterns on walls. The ergonomic handle ensures comfort and ease of use, making it ideal for achieving a pronounced, tactile finish in any interior space.

