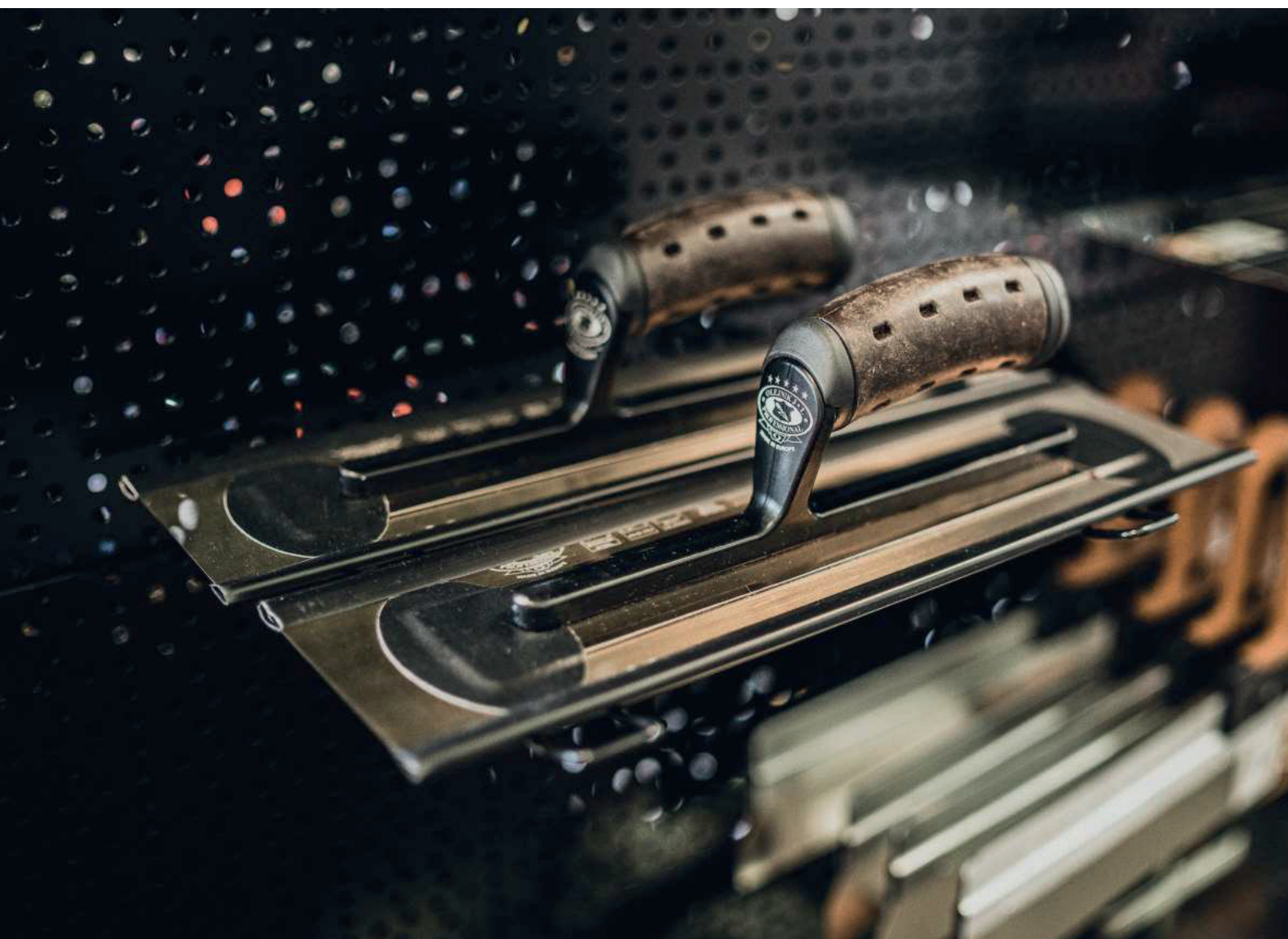




CATALOG





A BRAND WITH TRADITIONS SINCE 1980

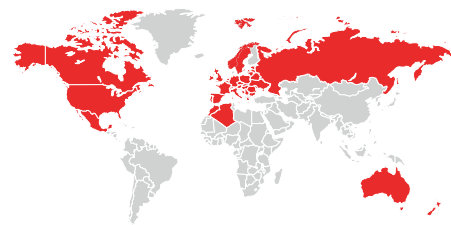


DEAR CUSTOMER,

it is our pleasure to present you our new catalog where you can find top quality hand tools produced by Zolwro – Baumeister sp. z o.o. under the OLEJNIK PROFESSIONAL brand.

Zolwro – Baumeister was founded in 1980 by Stanisława and Zdzisław Olejnik. Since then the company was built to the highest standards first in Wrocław, Poland and then moving to current headquarters in Oleśnica, Poland.

Zolwro – Baumeister sp. z o.o. has been delivering its products to over 30 countries around the world including: Poland, United States of America, Ukraine, Algeria, Marocco, Norway, South Korea the Czech Republic, Slovakia, Hungary, Germany or Austria and many others.



Jacek Olejnik

PREZES
ZARZĄDU



WIDE ASSORTMENT

TOOLS FOR PROFESSIONALS

**HIGH-QUALITY MATERIALS
FUNCTIONAL SOLUTIONS**

OUR OFFER

The basis of our assortment are high-quality manual construction tools - trowels, putty knives, and brick trowels. However, we do not limit ourselves to these products - we sell innovative tile leveling systems, premium rollers and levels, plastering laths, and more.

We encourage you to familiarize yourself with our rich offer and see for yourself that our tools are unique!



STEEL FOR BLADES

You will find here blades made of the highest quality spring steel, stainless steel and hardened steel. The material used for each of the tools is not accidental. We select it in accordance with its purpose tools serves as long as possible.



ERGONOMIC HANDLES

We have a wide selection of handles - choose the one that will provide you with the greatest comfort while working. You can choose from: leather, cork, two-component and wood.



WIDE RANGE OF SIZES

Regardless of your needs, we can guarantee that you will find a tool with the right blade size in our offer.



CONTENTS	PAGE
Premium trowels.....	7
Hawks.....	47
Tilers levelling kits.....	48
Premium skimming blades.....	52
Aluminium skimming blades Ergoplane.....	55
Two - component skimming blades Ergosoft.....	59
Plastic skimming blades Ergoplast.....	63
Extendable handles, adapters, mud rollers.....	67
Skimming blades sets.....	69
Facade taping knives.....	72
Forged brick trowels.....	75
Standard trowels.....	81
Putty knives.....	105
ABS floats.....	107
Scrapers.....	112
Mixing tubs, buckets.....	114
Tilers kits.....	115
Spirit levels.....	116
Screeding levels.....	117
Other.....	120





PREMIUM TROWELS

PREMIUM POLYCARBONATE TROWELS 1MM



PRODUCT NUMBER	DIMENSIONS [MM]	IN PACKAGE
127211279-LSS	279x110x1	1
127211305-LSS	305x110x1	1
127211356-LSS	356x110x1	1
127211406-LSS	406x110x1	1
127211457-LSS	457x110x1	1

Durable Super Flex Polycarbon, 1mm thick. Powder coated aluminium bar. Natural leather handle - alcantra.



PRODUCT NUMBER	DIMENSIONS [MM]	IN PACKAGE
127211279-LS	279x110x1	1
127211305-LS	305x110x1	1
127211356-LS	356x110x1	1
127211406-LS	406x110x1	1
127211457-LS	457x110x1	1

Durable Super Flex Polycarbon, 1mm thick. Powder coated aluminium bar. Natural leather handle - vintage.



PRODUCT NUMBER	DIMENSIONS [MM]	IN PACKAGE
127211279-K	279x110x1	1
127211305-K	305x110x1	1
127211356-K	356x110x1	1
127211406-K	406x110x1	1
127211457-K	457x110x1	1

Durable Super Flex Polycarbon, 1mm thick. Powder coated aluminium bar. Natural cork handle.

PREMIUM GOLD TROWELS 0,3MM



Hardened gold stainless steel. Glued Super Flex blade, 0,3mm thick. Powder coated aluminum bar. Natural leather handle - alcantra.

PRODUCT NUMBER	DIMENSIONS [MM]	IN PACKAGE
127310279-MHLSS	279x100x0,3	1
127310305-MHLSS	305x100x0,3	1
127310356-MHLSS	356x100x0,3	1
127310406-MHLSS	406x100x0,3	1
127310457-MHLSS	457x100x0,3	1
127312279-MHLSS	279x120x0,3	1
127312305-MHLSS	305x120x0,3	1
127312356-MHLSS	356x120x0,3	1
127312406-MHLSS	406x120x0,3	1
127312457-MHLSS	457x120x0,3	1



Hardened gold stainless steel. Glued Super Flex blade 0,3mm thick. Powder coated aluminum bar. Natural leather handle - vintage.

PRODUCT NUMBER	DIMENSIONS [MM]	IN PACKAGE
127310279-MHLS	279x100x0,3	1
127310305-MHLS	305x100x0,3	1
127310356-MHLS	356x100x0,3	1
127310406-MHLS	406x100x0,3	1
127310457-MHLS	457x100x0,3	1
127312279-MHLS	279x120x0,3	1
127312305-MHLS	305x120x0,3	1
127312356-MHLS	356x120x0,3	1
127312406-MHLS	406x120x0,3	1
127312457-MHLS	457x120x0,3	1



Hardened gold stainless steel. Glued Super Flex blade 0,3mm thick. Powder coated aluminum bar. Natural cork handle.

PRODUCT NUMBER	DIMENSIONS [MM]	IN PACKAGE
127310279-MHK	279x100x0,3	1
127310305-MHK	305x100x0,3	1
127310356-MHK	356x100x0,3	1
127310406-MHK	406x100x0,3	1
127310457-MHK	457x100x0,3	1
127312279-MHK	279x120x0,3	1
127312305-MHK	305x120x0,3	1
127312356-MHK	356x120x0,3	1
127312406-MHK	406x120x0,3	1
127312457-MHK	457x120x0,3	1



Hardened gold stainless steel. Glued Super Flex blade 0,3mm thick. Powder coated aluminum bar. Two-component handle.

PRODUCT NUMBER	DIMENSIONS [MM]	IN PACKAGE
127310279-MH2K	279x100x0,3	1
127310305-MH2K	305x100x0,3	1
127310356-MH2K	356x100x0,3	1
127310406-MH2K	406x100x0,3	1
127310457-MH2K	457x100x0,3	1
127312279-MH2K	279x120x0,3	1
127312305-MH2K	305x120x0,3	1
127312356-MH2K	356x120x0,3	1
127312406-MH2K	406x120x0,3	1
127312457-MH2K	457x120x0,3	1

PREMIUM GOLD TROWELS 0,4MM



Hardened gold stainless steel. Glued Medium Flex blade 0,4mm thick. Powder coated aluminum bar. Natural leather handle - alcantara.

PRODUCT NUMBER	DIMENSIONS [MM]	IN PACKAGE
127410279-MHLSS	279x100x0,4	1
127410305-MHLSS	305x100x0,4	1
127410356-MHLSS	356x100x0,4	1
127410406-MHLSS	406x100x0,4	1
127410457-MHLSS	457x100x0,4	1
127412279-MHLSS	279x120x0,4	1
127412305-MHLSS	305x120x0,4	1
127412356-MHLSS	356x120x0,4	1
127412406-MHLSS	406x120x0,4	1
127412457-MHLSS	457x120x0,4	1



Hardened gold stainless steel. Glued Medium Flex blade 0,4mm thick. Powder coated aluminum bar. Natural leather handle - vintage.

PRODUCT NUMBER	DIMENSIONS [MM]	IN PACKAGE
127410279-MHLS	279x100x0,4	1
127410305-MHLS	305x100x0,4	1
127410356-MHLS	356x100x0,4	1
127410406-MHLS	406x100x0,4	1
127410457-MHLS	457x100x0,4	1
127412279-MHLS	279x120x0,4	1
127412305-MHLS	305x120x0,4	1
127412356-MHLS	356x120x0,4	1
127412406-MHLS	406x120x0,4	1
127412457-MHLS	457x120x0,4	1



Hardened gold stainless steel. Glued Medium Flex blade 0,4mm thick. Powder coated aluminum bar. Natural cork handle.

PRODUCT NUMBER	DIMENSIONS [MM]	IN PACKAGE
127410279-MHLK	279x100x0,4	1
127410305-MHLK	305x100x0,4	1
127410356-MHLK	356x100x0,4	1
127410406-MHLK	406x100x0,4	1
127410457-MHLK	457x100x0,4	1
127412279-MHLK	279x120x0,4	1
127412305-MHLK	305x120x0,4	1
127412356-MHLK	356x120x0,4	1
127412406-MHLK	406x120x0,4	1
127412457-MHLK	457x120x0,4	1



Hardened gold stainless steel. Glued Medium Flex blade 0,4mm thick. Powder coated aluminum bar. Two-component handle.

PRODUCT NUMBER	DIMENSIONS [MM]	IN PACKAGE
127410279-MH2K	279x100x0,4	1
127410305-MH2K	305x100x0,4	1
127410356-MH2K	356x100x0,4	1
127410406-MH2K	406x100x0,4	1
127410457-MH2K	457x100x0,4	1
127412279-MH2K	279x120x0,4	1
127412305-MH2K	305x120x0,4	1
127412356-MH2K	356x120x0,4	1
127412406-MH2K	406x120x0,4	1
127412457-MH2K	457x120x0,4	1

PREMIUM SILVER TROWELS 0,4MM



Silver cold rolled stainless steel. Glued Medium Flex blade 0,4mm thick. Powder coated aluminum bar. Natural leather handle - alcantara.

PRODUCT NUMBER	DIMENSIONS [MM]	IN PACKAGE
127412279-MLSS	279x120x0,4	1
127412305-MLSS	305x120x0,4	1
127412356-MLSS	356x120x0,4	1
127412406-MLSS	406x120x0,4	1
127412457-MLSS	457x120x0,4	1



PRODUCT NUMBER	DIMENSIONS [MM]	IN PACKAGE
127412279-MLS	279x120x0,4	1
127412305-MLS	305x120x0,4	1
127412356-MLS	356x120x0,4	1
127412406-MLS	406x120x0,4	1
127412457-MLS	457x120x0,4	1

Silver cold rolled stainless steel. Glued Medium Flex blade 0,4mm thick. Powder coated aluminum bar. Natural leather handle - vintage.



PRODUCT NUMBER	DIMENSIONS [MM]	IN PACKAGE
127412279-MK	279x120x0,4	1
127412305-MK	305x120x0,4	1
127412356-MK	356x120x0,4	1
127412406-MK	406x120x0,4	1
127412457-MK	457x120x0,4	1

Silver cold rolled stainless steel. Glued Medium Flex blade 0,4mm thick. Powder coated aluminum bar. Natural cork handle.



PRODUCT NUMBER	DIMENSIONS [MM]	IN PACKAGE
127412279-M2K	279x120x0,4	1
127412305-M2K	305x120x0,4	1
127412356-M2K	356x120x0,4	1
127412406-M2K	406x120x0,4	1
127412457-M2K	457x120x0,4	1

Silver cold rolled stainless steel. Glued Medium Flex blade 0,4mm thick. Powder coated aluminum bar. Two-component handle.

PREMIUM CURVED SILVER TROWELS 0,4MM



PRODUCT NUMBER	DIMENSIONS [MM]	IN PACKAGE
127412279-MWLSS	279x120x0,4	1
127412305-MWLSS	305x120x0,4	1
127412356-MWLSS	356x120x0,4	1
127412406-MWLSS	406x120x0,4	1
127412457-MWLSS	457x120x0,4	1

Silver cold rolled stainless steel. Medium Flex curved blade 0,4mm thick. Powder coated aluminum bar. Natural leather handle - alcantara.



PRODUCT NUMBER	DIMENSIONS [MM]	IN PACKAGE
127412279-MWLS	279x120x0,4	1
127412305-MWLS	305x120x0,4	1
127412356-MWLS	356x120x0,4	1
127412406-MWLS	406x120x0,4	1
127412457-MWLS	457x120x0,4	1

Silver cold rolled stainless steel. Medium Flex curved blade 0,4mm thick. Powder coated aluminum bar. Natural leather handle - vintage.



PRODUCT NUMBER	DIMENSIONS [MM]	IN PACKAGE
127412279-MWK	279x120x0,4	1
127412305-MWK	305x120x0,4	1
127412356-MWK	356x120x0,4	1
127412406-MWK	406x120x0,4	1
127412457-MWK	457x120x0,4	1

Silver cold rolled stainless steel. Medium Flex curved blade 0,4mm thick. Powder coated aluminum bar. Natural cork handle.



PRODUCT NUMBER	DIMENSIONS [MM]	IN PACKAGE
127412279-MW2K	279x120x0,4	1
127412305-MW2K	305x120x0,4	1
127412356-MW2K	356x120x0,4	1
127412406-MW2K	406x120x0,4	1
127412457-MW2K	457x120x0,4	1

Silver cold rolled stainless steel. Medium Flex curved blade 0,4mm thick. Powder coated aluminum bar. Two-component handle.

PREMIUM SILVER TROWELS 0,5MM



PRODUCT NUMBER	DIMENSIONS [MM]	IN PACKAGE
127512279-MLSS	279x120x0,5	1
127512305-MLSS	305x120x0,5	1
127512356-MLSS	356x120x0,5	1
127512406-MLSS	406x120x0,5	1
127512457-MLSS	457x120x0,5	1

Silver cold rolled stainless steel. Flex blad 0,5mm thick. Powder coated aluminum bar. Natural leather handle - alcantara.



PRODUCT NUMBER	DIMENSIONS [MM]	IN PACKAGE
127512279-MLS	279x120x0,5	1
127512305-MLS	305x120x0,5	1
127512356-MLS	356x120x0,5	1
127512406-MLS	406x120x0,5	1
127512457-MLS	457x120x0,5	1

Silver cold rolled stainless steel. Flex blade 0,5mm thick. Powder coated aluminum bar. Natural leather handle - vintage.



PRODUCT NUMBER	DIMENSIONS [MM]	IN PACKAGE
127512279-MK	279x120x0,5	1
127512305-MK	305x120x0,5	1
127512356-MK	356x120x0,5	1
127512406-MK	406x120x0,5	1
127512457-MK	457x120x0,5	1

Silver cold rolled stainless steel. Flex blade 0,5mm thick. Powder coated aluminum bar. Natural cork handle.



PRODUCT NUMBER	DIMENSIONS [MM]	IN PACKAGE
127512279-M2K	279x120x0,5	1
127512305-M2K	305x120x0,5	1
127512356-M2K	356x120x0,5	1
127512406-M2K	406x120x0,5	1
127512457-M2K	457x120x0,5	1

Silver cold rolled stainless steel. Flex blade 0,5mm thick. Powder coated aluminum bar. Two-component handle.

PREMIUM CURVED SILVER TROWELS 0,5MM



PRODUCT NUMBER	DIMENSIONS [MM]	IN PACKAGE
127512279-MWLSS	279x120x0,5	1
127512305-MWLSS	305x120x0,5	1
127512356-MWLSS	356x120x0,5	1
127512406-MWLSS	406x120x0,5	1
127512457-MWLSS	457x120x0,5	1

Silver cold rolled stainless steel. Flex curved blade thickness 0,5mm. Powder coated aluminum bar. Natural leather handle - alcantara.



PRODUCT NUMBER	DIMENSIONS [MM]	IN PACKAGE
127512279-MWLS	279x120x0,5	1
127512305-MWLS	305x120x0,5	1
127512356-MWLS	356x120x0,5	1
127512406-MWLS	406x120x0,5	1
127512457-MWLS	457x120x0,5	1

Silver cold rolled stainless steel. Flex curved blade 0,5mm thick. Powder coated aluminum bar. Natural leather handle - vintage



PRODUCT NUMBER	DIMENSIONS [MM]	IN PACKAGE
127512279-MWK	279x120x0,5	1
127512305-MWK	305x120x0,5	1
127512356-MWK	356x120x0,5	1
127512406-MWK	406x120x0,5	1
127512457-MWK	457x120x0,5	1

Silver cold rolled stainless steel. Flex curved blade 0,5mm thick. Powder coated aluminum bar. Natural cork handle.



PRODUCT NUMBER	DIMENSIONS [MM]	IN PACKAGE
127512279-MW2K	279x120x0,5	1
127512305-MW2K	305x120x0,5	1
127512356-MW2K	356x120x0,5	1
127512406-MW2K	406x120x0,5	1
127512457-MW2K	457x120x0,5	1

Silver cold rolled stainless steel. Flex curved blade 0,5mm thick. Powder coated aluminum bar. Two-component handle.

PREMIUM GOLD TROWELS 0,65MM



PRODUCT NUMBER	DIMENSIONS [MM]	IN PACKAGE
127708203-MHLSS	203x86x0,65	1
127712279-MHLSS	279x120x0,65	1
127712305-MHLSS	305x120x0,65	1
127712356-MHLSS	356x120x0,65	1
127712406-MHLSS	406x120x0,65	1
127712457-MHLSS	457x120x0,65	1

Hardened gold stainless steel. Blade 0,65mm thick. Powder coated aluminum bar. Natural leather handle - alcantara.



PRODUCT NUMBER	DIMENSIONS [MM]	IN PACKAGE
127708203-MHLS	203x86x0,65	1
127712279-MHLS	279x120x0,65	1
127712305-MHLS	305x120x0,65	1
127712356-MHLS	356x120x0,65	1
127712406-MHLS	406x120x0,65	1
127712457-MHLS	457x120x0,65	1

Hardened gold stainless steel. Blade 0,65mm thick. Powder coated aluminum bar. Natural leather handle - vintage.



PRODUCT NUMBER	DIMENSIONS [MM]	IN PACKAGE
127708203-MHK	203x86x0,65	1
127712279-MHK	279x120x0,65	1
127712305-MHK	305x120x0,65	1
127712356-MHK	356x120x0,65	1
127712406-MHK	406x120x0,65	1
127712457-MHK	457x120x0,65	1

Hardened gold stainless steel. Blade 0,65mm thick. Powder coated aluminum bar. Natural cork handle.



PRODUCT NUMBER	DIMENSIONS [MM]	IN PACKAGE
127708203-MH2K	203x86x0,65	1
127712279-MH2K	279x120x0,65	1
127712305-MH2K	305x120x0,65	1
127712356-MH2K	356x120x0,65	1
127712406-MH2K	406x120x0,65	1
127712457-MH2K	457x120x0,65	1

Hardened gold stainless steel. Blade 0,65mm thick. Powder coated aluminum bar. Two-component handle

PREMIUM CURVED GOLD TROWELS 0,65MM



PRODUCT NUMBER	DIMENSIONS [MM]	IN PACKAGE
127708203-MHWLSS	203x86x0,65	1
127712279-MHWLSS	279x120x0,65	1
127712305-MHWLSS	305x120x0,65	1
127712356-MHWLSS	356x120x0,65	1
127712406-MHWLSS	406x120x0,65	1
127712457-MHWLSS	457x120x0,65	1

Hardened gold stainless steel. Curved blade 0,65mm thick. Powder coated aluminum bar. Natural leather handle - alcantara.



PRODUCT NUMBER	DIMENSIONS [MM]	IN PACKAGE
127708203-MHWLS	203x86x0,65	1
127712279-MHWLS	279x120x0,65	1
127712305-MHWLS	305x120x0,65	1
127712356-MHWLS	356x120x0,65	1
127712406-MHWLS	406x120x0,65	1
127712457-MHWLS	457x120x0,65	1

Hardened gold stainless steel. Curved blade 0,65mm thick. Powder coated aluminum bar. Natural leather handle - vintage.



PRODUCT NUMBER	DIMENSIONS [MM]	IN PACKAGE
127708203-MHWK	203x86x0,65	1
127712279-MHWK	279x120x0,65	1
127712305-MHWK	305x120x0,65	1
127712356-MHWK	356x120x0,65	1
127712406-MHWK	406x120x0,65	1
127712457-MHWK	457x120x0,65	1

Hardened gold stainless steel. Curved blade
0,65mm thick. Powder coated aluminum bar.
Natural cork handle.



PRODUCT NUMBER	DIMENSIONS [MM]	IN PACKAGE
127708203-MHW2K	203x86x0,65	1
127712279-MHW2K	279x120x0,65	1
127712305-MHW2K	305x120x0,65	1
127712356-MHW2K	356x120x0,65	1
127712406-MHW2K	406x120x0,65	1
127712457-MHW2K	457x120x0,65	1

Hardened gold stainless steel. Curved blade
0,65mm thick. Powder coated aluminum bar.
Two-component handle.

PREMIUM NOTCHED GOLD TROWELS 0,65MM



Hardened gold stainless steel. Notched blade 0,65mm thick. Powder coated aluminum bar. Natural leather handle - alcantara.

TOOTH 4X4

PRODUCT NUMBER	DIMENSIONS [MM]	IN PACKAGE
127712279E4-MHLSS	279x120x0,65	1
127712305E4-MHLSS	305x120x0,65	1
127712356E4-MHLSS	356x120x0,65	1
127712406E4-MHLSS	406x120x0,65	1
127712457E4-MHLSS	457x120x0,65	1
127712508E4-MHLSS	508x120x0,65	1

TOOTH 6X6

PRODUCT NUMBER	DIMENSIONS [MM]	IN PACKAGE
127712279E6-MHLSS	279x120x0,65	1
127712305E6-MHLSS	305x120x0,65	1
127712356E6-MHLSS	356x120x0,65	1
127712406E6-MHLSS	406x120x0,65	1
127712457E6-MHLSS	457x120x0,65	1
127712508E6-MHLSS	508x120x0,65	1

TOOTH 8X8

PRODUCT NUMBER	DIMENSIONS [MM]	IN PACKAGE
127712279E8-MHLSS	279x120x0,65	1
127712305E8-MHLSS	305x120x0,65	1
127712356E8-MHLSS	356x120x0,65	1
127712406E8-MHLSS	406x120x0,65	1
127712457E8-MHLSS	457x120x0,65	1
127712508E8-MHLSS	508x120x0,65	1

TOOTH 10X10

TOOTH 12X12

PRODUCT NUMBER	DIMENSIONS [MM]	IN PACKAGE
127712279E10-MHLSS	279x120x0,65	1
127712305E10-MHLSS	305x120x0,65	1
127712356E10-MHLSS	356x120x0,65	1
127712406E10-MHLSS	406x120x0,65	1
127712457E10-MHLSS	457x120x0,65	1
127712508E10-MHLSS	508x120x0,65	1

PRODUCT NUMBER	DIMENSIONS [MM]	IN PACKAGE
127712279E12-MHLSS	279x120x0,65	1
127712305E12-MHLSS	305x120x0,65	1
127712356E12-MHLSS	356x120x0,65	1
127712406E12-MHLSS	406x120x0,65	1
127712457E12-MHLSS	457x120x0,65	1
127712508E12-MHLSS	508x120x0,65	1



Hardened gold stainless steel. Notched blade 0,65mm thick. Powder coated aluminum bar.
Natural leather handle - vintage.

TOOTH 4X4

PRODUCT NUMBER	DIMENSIONS [MM]	IN PACKAGE
127712279E4-MHLS	279x120x0,65	1
127712305E4-MHLS	305x120x0,65	1
127712356E4-MHLS	356x120x0,65	1
127712406E4-MHLS	406x120x0,65	1
127712457E4-MHLS	457x120x0,65	1
127712508E4-MHLS	508x120x0,65	1

TOOTH 6X6

PRODUCT NUMBER	DIMENSIONS [MM]	IN PACKAGE
127712279E6-MHLS	279x120x0,65	1
127712305E6-MHLS	305x120x0,65	1
127712356E6-MHLS	356x120x0,65	1
127712406E6-MHLS	406x120x0,65	1
127712457E6-MHLS	457x120x0,65	1
127712508E6-MHLS	508x120x0,65	1

TOOTH 8X8

PRODUCT NUMBER	DIMENSIONS [MM]	IN PACKAGE
127712279E8-MHLS	279x120x0,65	1
127712305E8-MHLS	305x120x0,65	1
127712356E8-MHLS	356x120x0,65	1
127712406E8-MHLS	406x120x0,65	1
127712457E8-MHLS	457x120x0,65	1
127712508E8-MHLS	508x120x0,65	1

TOOTH 10X10

PRODUCT NUMBER	DIMENSIONS [MM]	IN PACKAGE
127712279E10-MHLS	279x120x0,65	1
127712305E10-MHLS	305x120x0,65	1
127712356E10-MHLS	356x120x0,65	1
127712406E10-MHLS	406x120x0,65	1
127712457E10-MHLS	457x120x0,65	1
127712508E10-MHLS	508x120x0,65	1

TOOTH 12X12

PRODUCT NUMBER	DIMENSIONS [MM]	IN PACKAGE
127712279E12-MHLS	279x120x0,65	1
127712305E12-MHLS	305x120x0,65	1
127712356E12-MHLS	356x120x0,65	1
127712406E12-MHLS	406x120x0,65	1
127712457E12-MHLS	457x120x0,65	1
127712508E12-MHLS	508x120x0,65	1



Hardened gold stainless steel. Notched blade 0,65mm thick. Powder coated aluminum bar. Natural cork handle.

TOOTH 4X4

PRODUCT NUMBER	DIMENSIONS [MM]	IN PACKAGE
127712279E4-MHK	279x120x0,65	1
127712305E4-MHK	305x120x0,65	1
127712356E4-MHK	356x120x0,65	1
127712406E4-MHK	406x120x0,65	1
127712457E4-MHK	457x120x0,65	1
127712508E4-MHK	508x120x0,65	1

TOOTH 6X6

PRODUCT NUMBER	DIMENSIONS [MM]	IN PACKAGE
127712279E6-MHK	279x120x0,65	1
127712305E6-MHK	305x120x0,65	1
127712356E6-MHK	356x120x0,65	1
127712406E6-MHK	406x120x0,65	1
127712457E6-MHK	457x120x0,65	1
127712508E6-MHK	508x120x0,65	1

TOOTH 8X8

PRODUCT NUMBER	DIMENSIONS [MM]	IN PACKAGE
127712279E8-MHK	279x120x0,65	1
127712305E8-MHK	305x120x0,65	1
127712356E8-MHK	356x120x0,65	1
127712406E8-MHK	406x120x0,65	1
127712457E8-MHK	457x120x0,65	1
127712508E8-MHK	508x120x0,65	1

TOOTH 10X10

TOOTH 12X12

PRODUCT NUMBER	DIMENSIONS [MM]	IN PACKAGE
127712279E10-MHK	279x120x0,65	1
127712305E10-MHK	305x120x0,65	1
127712356E10-MHK	356x120x0,65	1
127712406E10-MHK	406x120x0,65	1
127712457E10-MHK	457x120x0,65	1
127712508E10-MHK	508x120x0,65	1

PRODUCT NUMBER	DIMENSIONS [MM]	IN PACKAGE
127712279E12-MHK	279x120x0,65	1
127712305E12-MHK	305x120x0,65	1
127712356E12-MHK	356x120x0,65	1
127712406E12-MHK	406x120x0,65	1
127712457E12-MHK	457x120x0,65	1
127712508E12-MHK	508x120x0,65	1



Hardened gold stainless steel. Notched blade 0,65mm thick. Powder coated aluminum bar. Two-component handle.

TOOTH 4X4

TOOTH 6X6

TOOTH 8X8

TOOTH 10X10

TOOTH 12X12

PRODUCT NUMBER	DIMENSIONS [MM]	IN PACKAGE
127712279E4-MH2K	279x120x0,65	1
127712305E4-MH2K	305x120x0,65	1
127712356E4-MH2K	356x120x0,65	1
127712406E4-MH2K	406x120x0,65	1
127712457E4-MH2K	457x120x0,65	1
127712508E4-MH2K	508x120x0,65	1

PRODUCT NUMBER	DIMENSIONS [MM]	IN PACKAGE
127712279E6-MH2K	279x120x0,65	1
127712305E6-MH2K	305x120x0,65	1
127712356E6-MH2K	356x120x0,65	1
127712406E6-MH2K	406x120x0,65	1
127712457E6-MH2K	457x120x0,65	1
127712508E6-MH2K	508x120x0,65	1

PRODUCT NUMBER	DIMENSIONS [MM]	IN PACKAGE
127712279E8-MH2K	279x120x0,65	1
127712305E8-MH2K	305x120x0,65	1
127712356E8-MH2K	356x120x0,65	1
127712406E8-MH2K	406x120x0,65	1
127712457E8-MH2K	457x120x0,65	1
127712508E8-MH2K	508x120x0,65	1

PRODUCT NUMBER	DIMENSIONS [MM]	IN PACKAGE
127712279E10-MH2K	279x120x0,65	1
127712305E10-MH2K	305x120x0,65	1
127712356E10-MH2K	356x120x0,65	1
127712406E10-MH2K	406x120x0,65	1
127712457E10-MH2K	457x120x0,65	1
127712508E10-MH2K	508x120x0,65	1

PRODUCT NUMBER	DIMENSIONS [MM]	IN PACKAGE
127712279E12-MH2K	279x120x0,65	1
127712305E12-MH2K	305x120x0,65	1
127712356E12-MH2K	356x120x0,65	1
127712406E12-MH2K	406x120x0,65	1
127712457E12-MH2K	457x120x0,65	1
127712508E12-MH2K	508x120x0,65	1

PREMIUM NOTCHED SILVER TROWELS 0,7MM



Silver cold rolled stainless steel. Notched blade 0,7mm thick. Powder coated aluminum bar. Natural leather handle - alcantara.

TOOTH 4X4

PRODUCT NUMBER	DIMENSIONS [MM]	IN PACKAGE
127713279E4-MLSS	279x120x0,7	1
127713305E4-MLSS	305x120x0,7	1
127713356E4-MLSS	356x120x0,7	1
127713406E4-MLSS	406x120x0,7	1
127713457E4-MLSS	457x120x0,7	1
127713508E4-MLSS	508x120x0,7	1

TOOTH 6X6

PRODUCT NUMBER	DIMENSIONS [MM]	IN PACKAGE
127713279E6-MLSS	279x120x0,7	1
127713305E6-MLSS	305x120x0,7	1
127713356E6-MLSS	356x120x0,7	1
127713406E6-MLSS	406x120x0,7	1
127713457E6-MLSS	457x120x0,7	1
127713508E6-MLSS	508x120x0,7	1

TOOTH 8X8

PRODUCT NUMBER	DIMENSIONS [MM]	IN PACKAGE
127713279E8-MLSS	279x120x0,7	1
127713305E8-MLSS	305x120x0,7	1
127713356E8-MLSS	356x120x0,7	1
127713406E8-MLSS	406x120x0,7	1
127713457E8-MLSS	457x120x0,7	1
127713508E8-MLSS	508x120x0,7	1

TOOTH 10X10

TOOTH 12X12

PRODUCT NUMBER	DIMENSIONS [MM]	IN PACKAGE
127713279E10-MLSS	279x120x0,7	1
127713305E10-MLSS	305x120x0,7	1
127713356E10-MLSS	356x120x0,7	1
127713406E10-MLSS	406x120x0,7	1
127713457E10-MLSS	457x120x0,7	1
127713508E10-MLSS	508x120x0,7	1

PRODUCT NUMBER	DIMENSIONS [MM]	IN PACKAGE
127713279E12-MLSS	279x120x0,7	1
127713305E12-MLSS	305x120x0,7	1
127713356E12-MLSS	356x120x0,7	1
127713406E12-MLSS	406x120x0,7	1
127713457E12-MLSS	457x120x0,7	1
127713508E12-MLSS	508x120x0,7	1



Silver cold rolled stainless steel. Notched blade 0,7mm thick. Powder coated aluminum bar. Natural leather handle - vintage.

TOOTH 4X4

PRODUCT NUMBER	DIMENSIONS [MM]	IN PACKAGE
127713279E4-MLS	279x120x0,7	1
127713305E4-MLS	305x120x0,7	1
127713356E4-MLS	356x120x0,7	1
127713406E4-MLS	406x120x0,7	1
127713457E4-MLS	457x120x0,7	1
127713508E4-MLS	508x120x0,7	1

TOOTH 6X6

PRODUCT NUMBER	DIMENSIONS [MM]	IN PACKAGE
127713279E6-MLS	279x120x0,7	1
127713305E6-MLS	305x120x0,7	1
127713356E6-MLS	356x120x0,7	1
127713406E6-MLS	406x120x0,7	1
127713457E6-MLS	457x120x0,7	1
127713508E6-MLS	508x120x0,7	1

TOOTH 8X8

PRODUCT NUMBER	DIMENSIONS [MM]	IN PACKAGE
127713279E8-MLS	279x120x0,7	1
127713305E8-MLS	305x120x0,7	1
127713356E8-MLS	356x120x0,7	1
127713406E8-MLS	406x120x0,7	1
127713457E8-MLS	457x120x0,7	1
127713508E8-MLS	508x120x0,7	1

TOOTH 10X10

PRODUCT NUMBER	DIMENSIONS [MM]	IN PACKAGE
127713279E10-MLS	279x120x0,7	1
127713305E10-MLS	305x120x0,7	1
127713356E10-MLS	356x120x0,7	1
127713406E10-MLS	406x120x0,7	1
127713457E10-MLS	457x120x0,7	1
127713508E10-MLS	508x120x0,7	1

TOOTH 12X12

PRODUCT NUMBER	DIMENSIONS [MM]	IN PACKAGE
127713279E12-MLS	279x120x0,7	1
127713305E12-MLS	305x120x0,7	1
127713356E12-MLS	356x120x0,7	1
127713406E12-MLS	406x120x0,7	1
127713457E12-MLS	457x120x0,7	1
127713508E12-MLS	508x120x0,7	1



Silver cold rolled stainless steel. Notched blade 0,7mm thick. Powder coated aluminum bar. Natural cork handle.

**TOOTH
4X4**

PRODUCT NUMBER	DIMENSIONS [MM]	IN PACKAGE
127713279E4-MK	279x120x0,7	1
127713305E4-MK	305x120x0,7	1
127713356E4-MK	356x120x0,7	1
127713406E4-MK	406x120x0,7	1
127713457E4-MK	457x120x0,7	1
127713508E4-MK	508x120x0,7	1

**TOOTH
6X6**

PRODUCT NUMBER	DIMENSIONS [MM]	IN PACKAGE
127713279E6-MK	279x120x0,7	1
127713305E6-MK	305x120x0,7	1
127713356E6-MK	356x120x0,7	1
127713406E6-MK	406x120x0,7	1
127713457E6-MK	457x120x0,7	1
127713508E6-MK	508x120x0,7	1

**TOOTH
8X8**

PRODUCT NUMBER	DIMENSIONS [MM]	IN PACKAGE
127713279E8-MK	279x120x0,7	1
127713305E8-MK	305x120x0,7	1
127713356E8-MK	356x120x0,7	1
127713406E8-MK	406x120x0,7	1
127713457E8-MK	457x120x0,7	1
127713508E8-MK	508x120x0,7	1

TOOTH 10X10

TOOTH 12X12

PRODUCT NUMBER	DIMENSIONS [MM]	IN PACKAGE
127713279E10-MK	279x120x0,7	1
127713305E10-MK	305x120x0,7	1
127713356E10-MK	356x120x0,7	1
127713406E10-MK	406x120x0,7	1
12773457E10-MK	457x120x0,7	1
127713508E10-MK	508x120x0,7	1

PRODUCT NUMBER	DIMENSIONS [MM]	IN PACKAGE
127713279E12-MK	279x120x0,7	1
127713305E12-MK	305x120x0,7	1
127713356E12-MK	356x120x0,7	1
127713406E12-MK	406x120x0,7	1
127713457E12-MK	457x120x0,7	1
127713508E12-MK	508x120x0,7	1



Silver cold rolled stainless steel. Notched blade 0,7mm thick. Powder coated aluminum bar. Two-component handle.

TOOTH 4X4

PRODUCT NUMBER	DIMENSIONS [MM]	IN PACKAGE
127713279E4-M2K	279x120x0,65	1
127713305E4-M2K	305x120x0,65	1
127713356E4-M2K	356x120x0,65	1
127713406E4-M2K	406x120x0,65	1
127713457E4-M2K	457x120x0,65	1
127713508E4-M2K	508x120x0,65	1

TOOTH 6X6

PRODUCT NUMBER	DIMENSIONS [MM]	IN PACKAGE
127713279E6-M2K	279x120x0,7	1
127713305E6-M2K	305x120x0,7	1
127713356E6-M2K	356x120x0,7	1
127713406E6-M2K	406x120x0,7	1
127713457E6-M2K	457x120x0,7	1
127713508E6-MK	508x120x0,7	1

TOOTH 8X8

PRODUCT NUMBER	DIMENSIONS [MM]	IN PACKAGE
127713279E8-M2K	279x120x0,7	1
127713305E8-M2K	305x120x0,7	1
127713356E8-M2K	356x120x0,7	1
127713406E8-M2K	406x120x0,7	1
127713457E8-M2K	457x120x0,7	1
127713508E8-M2K	508x120x0,7	1

TOOTH 10X10

PRODUCT NUMBER	DIMENSIONS [MM]	IN PACKAGE
127713279E10-M2K	279x120x0,7	1
127713305E10-M2K	305x120x0,7	1
127713356E10-M2K	356x120x0,7	1
127713406E10-M2K	406x120x0,7	1
127713457E10-M2K	457x120x0,7	1
127713508E10-M2K	508x120x0,7	1

TOOTH 12X12

PRODUCT NUMBER	DIMENSIONS [MM]	IN PACKAGE
127713279E12-M2K	279x120x0,7	1
127713305E12-M2K	305x120x0,7	1
127713356E12-M2K	356x120x0,7	1
127713406E12-M2K	406x120x0,7	1
127713457E12-M2K	457x120x0,7	1
127713508E12-M2K	508x120x0,7	1

PREMIUM VENETIAN TROWELS 0,3MM



PRODUCT NUMBER	DIMENSIONS [MM]	IN PACKAGE
1263240100-MHLSS-1	240x100x80x0,3	1

Hardened gold stainless steel. Super Flex blade 0,3mm thick. Powder coated aluminum bar. Natural leather handle - alcantara.



PRODUCT NUMBER	DIMENSIONS [MM]	IN PACKAGE
1263240100-MHLS-1	240x100x80x0,3	1

Hardened gold stainless steel. Super Flex blade 0,3mm thick. Powder coated aluminum bar. Natural leather handle - vintage.



PRODUCT NUMBER	DIMENSIONS [MM]	IN PACKAGE
1263240100-MHK-1	240x100x80x0,3	1

Hardened gold stainless steel. Super Flex blade 0,3mm thick. Powder coated aluminum bar. Natural cork handle.



PRODUCT NUMBER	DIMENSIONS [MM]	IN PACKAGE
1263240100-MH2K-1	240x100x80x0,3	1

Hardened gold stainless steel. Super Flex blade 0,3mm thick. Powder coated aluminum bar. Two-component handle.

PREMIUM VENETIAN TROWELS 0,3MM



PRODUCT NUMBER	DIMENSIONS [MM]	IN PACKAGE
1263200086-MHLSS-1	200x86x0,3	1

Hardened gold stainless steel. Super Flex blade 0,3mm thick. Powder coated aluminum bar. Natural leather handle - alcantara.



PRODUCT NUMBER	DIMENSIONS [MM]	IN PACKAGE
1263200086-MHLS-1	200x86x0,3	1

Hardened gold stainless steel. Super Flex blade 0,3mm thick. Powder coated aluminum bar. Natural leather handle - vintage.



PRODUCT NUMBER	DIMENSIONS [MM]	IN PACKAGE
1263200086-MHK1-1	200x86x0,3	1

Hardened gold stainless steel. Super Flex blade 0,3mm thick. Powder coated aluminum bar. Natural cork handle.



PRODUCT NUMBER	DIMENSIONS [MM]	IN PACKAGE
1263200086-MH2K-1	200x86x0,3	1

Hardened gold stainless steel. Super Flex blade 0,3mm thick. Powder coated aluminum bar. Two-component handle.

PREMIUM INVERTED VENETIAN TROWELS 0,3MM



PRODUCT NUMBER	DIMENSIONS [MM]	IN PACKAGE
1263240100-MHLSS-2	240x130x100x0,3	1

Hardened gold stainless steel. Super Flex blade 0,3mm thick. Powder coated aluminum bar. Natural leather handle - alcantara.



PRODUCT NUMBER	DIMENSIONS [MM]	IN PACKAGE
1263240100-MHLS-2	240x130x100x0,3	1

Hardened gold stainless steel. Super Flex blade 0,3mm thick. Powder coated aluminum bar. Natural leather handle - vintage.



PRODUCT NUMBER	DIMENSIONS [MM]	IN PACKAGE
1263240100-MHK-2	240x130x100x0,3	1

Hardened gold stainless steel. Super Flex blade 0,3mm thick. Powder coated aluminum bar. Natural cork handle.



PRODUCT NUMBER	DIMENSIONS [MM]	IN PACKAGE
1263240100-MH2K-2	240x130x100x0,3	1

Hardened gold stainless steel. Super Flex blade 0,3mm thick. Powder coated aluminum bar. Two-component handle.

PREMIUM VENETIAN IRON-SHAPE TROWELS 0,3MM



PRODUCT NUMBER	DIMENSIONS [MM]	IN PACKAGE
1263240086-MHLSS-3	240x86x0,3mm	1

Hardened gold stainless steel. Super Flex blade 0,3mm thick. Powder coated aluminum bar. Natural leather handle - alcantara.



PRODUCT NUMBER	DIMENSIONS [MM]	IN PACKAGE
1263240086-MHLS-3	240x86x0,3mm	1

Hardened gold stainless steel. Super Flex blade 0,3mm thick. Powder coated aluminum bar. Natural leather handle - vintage.



PRODUCT NUMBER	DIMENSIONS [MM]	IN PACKAGE
1263240086-MHK-3	240x86x0,3mm	1

Hardened gold stainless steel. Super Flex blade 0,3mm thick. Powder coated aluminum bar. Natural cork handle.



PRODUCT NUMBER	DIMENSIONS [MM]	IN PACKAGE
1263240086-MH2K-3	240x86x0,3mm	1

Hardened gold stainless steel. Super Flex blade 0,3mm thick. Powder coated aluminum bar. Two-component handle.

PREMIUM VENETIAN TROWELS 0,65MM



PRODUCT NUMBER	DIMENSIONS [MM]	IN PACKAGE
126520-MHLSS	200x70x80x0,65	1
126524-MHLSS	240x90x110x0,65	1
126528-MHLSS	280x90x110x0,65	1

Hardened gold stainless steel. Blade 0,65mm thick. Rounded corners and polished blade to mirror effect. Powder coated aluminum bar. Natural leather handle - alcantara.



PRODUCT NUMBER	DIMENSIONS [MM]	IN PACKAGE
126520-MHLS	200x70x80x0,65	1
126524-MHLS	240x90x110x0,65	1
126528-MHLS	280x90x110x0,65	1

Hardened gold stainless steel. Blade 0,65mm thick. Rounded corners and polished blade to mirror effect. Powder coated aluminum bar. Natural leather handle - vintage.



PRODUCT NUMBER	DIMENSIONS [MM]	IN PACKAGE
126520-MHK	200x70x80x0,65	1
126524-MHK	240x90x110x0,65	1
126528-MHK	280x90x110x0,65	1

Hardened gold stainless steel. Blade 0,65mm thick. Rounded corners and polished blade to mirror effect. Powder coated aluminum bar. Natural cork handle.



PRODUCT NUMBER	DIMENSIONS [MM]	IN PACKAGE
126520-MH2K	200x70x80x0,65	1
126524-MH2K	240x90x110x0,65	1
126528-MH2K	280x90x110x0,65	1

Hardened gold stainless steel. Blade 0,65mm thick. Rounded corners and polished blade to mirror effect. Powder coated aluminum bar. Two-component handle.

PREMIUM VENETIAN INVERTED TROWELS 0,65MM



PRODUCT NUMBER	DIMENSIONS [MM]	IN PACKAGE
126124-MHLSS	240x130x100x0,65	1

Hardened gold stainless steel. Blade 0,65mm thick Rounded corners and polished blade to mirror effect. Powder coated aluminum bar. Natural leather handle - alcantara.



PRODUCT NUMBER	DIMENSIONS [MM]	IN PACKAGE
126124-MHLS	240x130x100x0,65	1

Hardened gold stainless steel. Blade 0,65mm thick Rounded corners and polished blade to mirror effect. Powder coated aluminum bar. Natural leather handle - vintage.



PRODUCT NUMBER	DIMENSIONS [MM]	IN PACKAGE
126124-MHK	240x130x100x0,65	1

Hardened gold stainless steel. Blade 0,65mm thick Rounded corners and polished blade to mirror effect. Powder coated aluminum bar. Natural cork handle.



PRODUCT NUMBER	DIMENSIONS [MM]	IN PACKAGE
126124-MH2K	240x130x100x0,65	1

Hardened gold stainless steel. Blade 0,65mm thick Rounded corners and polished blade to mirror effect. Powder coated aluminum bar. Two-component handle

POLYCARBONATE VENETIAN TROWELS 1MM



PRODUCT NUMBER	DIMENSIONS [MM]	IN PACKAGE
1262240100-MPLSS-1t	240x100x80x1	1

Polycarbonate glued trowel. Blade 1 mm thick. Powder coated aluminum bar. Natural leather grinded handle - alcantra.



PRODUCT NUMBER	DIMENSIONS [MM]	IN PACKAGE
1262240100-MPLS-1	240x100x80x1	1

Polycarbonate glued trowel. Blade 1 mm thick. Powder coated aluminum bar. Natural leather handle - vintage



PRODUCT NUMBER	DIMENSIONS [MM]	IN PACKAGE
1262240100-MPK-1	240x100x80x1	1

Polycarbonate glued trowel. Blade 1 mm thick. Powder coated aluminum bar. Natural cork handle.



PRODUCT NUMBER	DIMENSIONS [MM]	IN PACKAGE
1262240100-MP2K-1	240x100x80x1	1

Polycarbonate glued trowel. Blade 1 mm thick. Powder coated aluminum bar. Two-component handle

POLYCARBONATE VENETIAN TROWELS 1MM



PRODUCT NUMBER	DIMENSIONS [MM]	IN PACKAGE
1262200086-MPLSS-1	200x86x1	1

Polycarbonate glued trowel. Blade 1 mm thick. Powder coated aluminum bar. Natural leather handle - alcantara.



PRODUCT NUMBER	DIMENSIONS [MM]	IN PACKAGE
1262200086-MPLS-1	200x86x1	1

Polycarbonate glued trowel. Blade 1 mm thick. Powder coated aluminum bar. Natural leather handle - vintag



PRODUCT NUMBER	DIMENSIONS [MM]	IN PACKAGE
1262200086-MPK1-1	200x86x1	1

Polycarbonate glued trowel. Blade 1 mm thick. Powder coated aluminum bar. Natural cork hand



PRODUCT NUMBER	DIMENSIONS [MM]	IN PACKAGE
1262200086-MP2K-1	200x86x1	1

Polycarbonate glued trowel. Blade 1 mm thick. Powder coated aluminum bar. Two-component handle.

POLYCARBONATE INVERTED VENETIAN TROWELS 1MM



PRODUCT NUMBER	DIMENSIONS [MM]	IN PACKAGE
1262240100-MPLSS-2	240x130x100x1	1

Polycarbonate glued trowel. Blade 1 mm thick. Powder coated aluminum bar. Natural leather handle - alcantara.



PRODUCT NUMBER	DIMENSIONS [MM]	IN PACKAGE
1262240100-MPLS-2	240x130x100x1	1

Polycarbonate glued trowel. Blade 1 mm thick. Powder coated aluminum bar. Natural leather handle - vintage



PRODUCT NUMBER	DIMENSIONS [MM]	IN PACKAGE
1262240100-MPK-2	240x130x100x1	1

Polycarbonate glued trowel. Blade 1 mm thick. Powder coated aluminum bar. Natural cork handle



PRODUCT NUMBER	DIMENSIONS [MM]	IN PACKAGE
1262240100-MP2K-2	240x130x100x1	1

Polycarbonate glued trowel. Blade 1 mm thick. Powder coated aluminum bar. Two-component handle

POLYCARBONATE VENETIAN IRON-SHAPE TROWELS 1MM



PRODUCT NUMBER	DIMENSIONS [MM]	IN PACKAGE
1262240086-MPLSS-3	240x86x1mm	1

Polycarbonate glued trowel. Blade 1 mm thick. Powder coated aluminum bar. Natural leather handle - alcantara.



PRODUCT NUMBER	DIMENSIONS [MM]	IN PACKAGE
1262240086-MPLS-3	240x86x1mm	1

Polycarbonate glued trowel. Blade 1 mm thick. Powder coated aluminum bar. Natural leather handle - vintage.



PRODUCT NUMBER	DIMENSIONS [MM]	IN PACKAGE
1262240086-MPK-3	240x86x1mm	1

Polycarbonate glued trowel. Blade 1 mm thick. Powder coated aluminum bar. Natural cork handle.



PRODUCT NUMBER	DIMENSIONS [MM]	IN PACKAGE
1262240086-MP2K-3	240x86x1mm	1

Polycarbonate glued trowel. Blade 1 mm thick. Powder coated aluminum bar. Two-component handle.

DOUBLE ROUNDED STAINLESS STEEL POOL TROWELS



PRODUCT NUMBER	DIMENSIONS [MM]	IN PACKAGE
127712279-MSOHLSS	279x120x0,65	1
127712305-MSOHLSS	305x120x0,65	1
127712356-MSOHLSS	356x120x0,65	1
127712406-MSOHLSS	406x120x0,65	1
127712457-MSOHLSS	457x120x0,65	1

Hardened gold stainless steel. Blade thickness 0,65mm. Powder coated aluminum bar.
Natural leather handle - alcantara.



PRODUCT NUMBER	DIMENSIONS [MM]	IN PACKAGE
127712279-MSOHLS	279x120x0,65	1
127712305-MSOHLS	305x120x0,65	1
127712356-MSOHLS	356x120x0,65	1
127712406-MSOHLS	406x120x0,65	1
127712457-MSOHLS	457x120x0,65	1

Hardened gold stainless steel. Blade thickness 0,65mm. Powder coated aluminum bar.
Natural leather handle - vintage.



PRODUCT NUMBER	DIMENSIONS [MM]	IN PACKAGE
127712279-MSOHK	279x120x0,65	1
127712305-MSOHK	305x120x0,65	1
127712356-MSOHK	356x120x0,65	1
127712406-MSOHK	406x120x0,65	1
127712457-MSOHK	457x120x0,65	1

Hardened gold stainless steel. Blade thickness 0,65mm. Powder coated aluminum bar.
Natural cork handle.



PRODUCT NUMBER	DIMENSIONS [MM]	IN PACKAGE
127712279-MSOH2K	279x120x0,65	1
127712305-MSOH2K	305x120x0,65	1
127712356-MSOH2K	356x120x0,65	1
127712406-MSOH2K	406x120x0,65	1
127712457-MSOH2K	457x120x0,65	1

Hardened gold stainless steel. Blade thickness 0,65mm. Powder coated aluminum bar.
Two-component handle.

DOUBLE ROUNDED POOL TROWELS SPRING STEEL



PRODUCT NUMBER	DIMENSIONS [MM]	IN PACKAGE
02771230-MSOLSS	280x120x0,7	1
02771240-MSOLSS	380x120x0,7	1
02771250-MSOLSS	480x120x0,7	1
02771260-MSOLSS	580x120x0,7	1

Silver spring steel. Blade thickness 0,7mm. Powder coated aluminum bar. Natural leather handle - alcantara.



PRODUCT NUMBER	DIMENSIONS [MM]	IN PACKAGE
02771230-MSOLS	280x120x0,7	1
02771240-MSOLS	380x120x0,7	1
02771250-MSOLS	480x120x0,7	1
02771260-MSOLS	580x120x0,7	1

Silver spring steel. Blade thickness 0,7mm. Powder coated aluminum bar. Natural leather handle - vintage.



PRODUCT NUMBER	DIMENSIONS [MM]	IN PACKAGE
02771230-MSOK	280x120x0,7	1
02771240-MSOK	380x120x0,7	1
02771250-MSOK	480x120x0,7	1
02771260-MSOK	580x120x0,7	1

Silver spring steel. Blade thickness 0,7mm. Powder coated aluminum bar. Natural cork handle.



PRODUCT NUMBER	DIMENSIONS [MM]	IN PACKAGE
027712230-MSO2K	280x120x0,7	1
027712240-MSO2K	380x120x0,7	1
027712250-MSO2K	480x120x0,7	1
027712260-MSO2K	580x120x0,7	1

Silver spring steel. Blade thickness 0,7mm. Powder coated aluminum bar. Two-component handle.

POINTED SPRING STEEL FLOORING TROWELS



PRODUCT NUMBER	DIMENSIONS [MM]	IN PACKAGE
027440-LSS	380x90x1,2	1
027450-LSS	480x90x1,2	1
027460-LSS	580x90x1,2	1

Silver spring steel. Blade 1,2mm thick. Powder coated aluminum bar. Natural leather handle - alcantara.



PRODUCT NUMBER	DIMENSIONS [MM]	IN PACKAGE
027440-LS	380x90x1,2	1
027450-LS	480x90x1,2	1
027460-LS	580x90x1,2	1

Silver spring steel. Blade 1,2mm thick. Powder coated aluminum bar. Natural leather handle - vintage.



PRODUCT NUMBER	DIMENSIONS [MM]	IN PACKAGE
027440-K	380x90x1,2	1
027450-K	480x90x1,2	1
027460-K	580x90x1,2	1

Silver spring steel. Blade thickness 1,2mm. Powder coated aluminum bar. Natural cork handle.



PRODUCT NUMBER	DIMENSIONS [MM]	IN PACKAGE
027440-2K	380x90x1,2	1
027450-2K	480x90x1,2	1
027460-2K	580x90x1,2	1

Silver spring steel. Blade 1,2mm thick. Powder coated aluminum bar. Two-component handle.

BUCKET SCOOPS WITH HAMMER



PRODUCT NUMBER	IN PACKAGE
125120-HLSS	1

Bucket scoop with hammer. Natural leather handle - alcantara.



PRODUCT NUMBER	IN PACKAGE
125120-HLS	1

Bucket scoop with hammer. Natural leather handle - vintage.



PRODUCT NUMBER	IN PACKAGE
125120-HK	1

Bucket scoop with hammer. Natural cork handle.



PRODUCT NUMBER	IN PACKAGE
125120-2KH	1

Bucket scoop with hammer. Two-component handle.

BUCKET SCOOPS



PRODUCT NUMBER

IN PACKAGE

125120-L

1

Bucket scoop. Natural leather handle.



PRODUCT NUMBER

IN PACKAGE

125120-K

1

Bucket scoop. Natural cork handle.



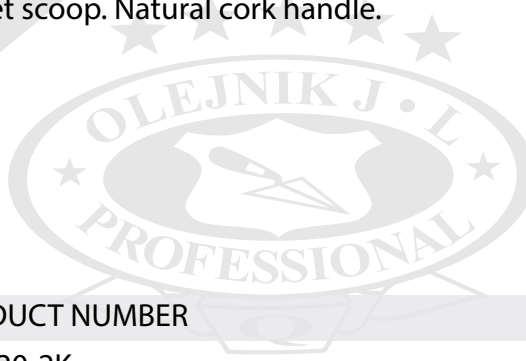
PRODUCT NUMBER

IN PACKAGE

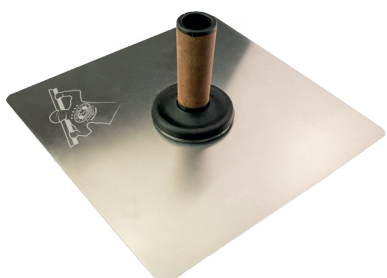
125120-2K

1

Bucket scoop. Two-component handle.

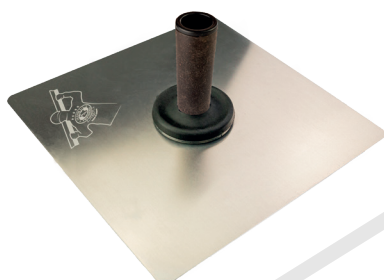


HAWKS



PRODUCT NUMBER	DIMENSIONS [MM]	IN PACKAGE
126713-LSS	330x330x1,75	1

Lightweight aluminium plates 1,75mm thick. Milled grooves to prevent putty from slipping. Anti-abrasion rubber. Ergonomic natural leather handle - alcantara.



PRODUCT NUMBER	DIMENSIONS [MM]	IN PACKAGE
126713-LS	330x330x1,75	1

Lightweight aluminium plates 1,75mm thick. Milled grooves to prevent putty from slipping. Anti-abrasion rubber. Ergonomic natural leather handle - vintage.



PRODUCT NUMBER	DIMENSIONS [MM]	IN PACKAGE
126713-K	330x330x1,75	1

Lightweight aluminium plates 1,75mm thick. Milled grooves to prevent putty from slipping. Anti-abrasion rubber. Ergonomic natural cork handle



PRODUCT NUMBER	DIMENSIONS [MM]	IN PACKAGE
126713-2K	330x330x1,75	1

Lightweight aluminium plates 1,75mm thick. Milled grooves to prevent putty from slipping. Anti-abrasion rubber. Ergonomic two-component handle

TILES LEVELLING SYSTEM – SCREW + NUT



PRODUCT NUMBER	SIZE [MM]	IN PACKAGE
P50S150N50-G1	1	1
P50S150N50-G2	2	1

Tiles levelling set: 50 anti-scratch pads, 150 screws and 50 nuts.
Packaging: 5L bucket.

PRODUCT NUMBER	SIZE [MM]	IN PACKAGE
P50S50N50-G1	1	1
P50S50N50-G2	2	1

Tiles levelling set: 50 anti-scratch pads, 50 screws and 50 nuts.
Packaging: 3L bucket.



PRODUCT NUMBER	QUANTITY X SIZE [MM]	IN PACKAGE
S100N000-G1	100 PCS X 1MM	1
S100N000-G2	100 PCS X 2MM	1
S200N000-G1	200 PCS X 1MM	1
S200N000-G2	200 PCS X 2MM	1

Screws



PRODUCT NUMBER	QUANTITY	IN PACKAGE
S000N050	50	1
S000N100	100	1

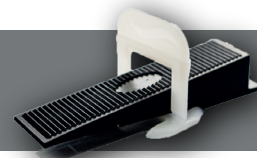
Nuts



PRODUCT NUMBER	QUANTITY	IN PACKAGE
P050	50	1
P100	100	1

Anti-scratch pads

TILES LEVELLING SYSTEM – WEDGE + CLIP



PRODUCT NUMBER	SIZE [MM]	IN PACKAGE
P50B100K50-G1	1	1
P50B100K50-G2	2	1

Tiles levelling set: 50 anti-scratch pads, 100 spacers and 50 wedges.
Packaging: 5L bucket.

PRODUCT NUMBER	SIZE [MM]	IN PACKAGE
B50K50-G1	1	1
B50K50-G2	2	1

Tiles levelling set: 50 spacers and 50 wedges.
Packaging: 3L bucket.

PRODUCT NUMBER	QUANTITY X SIZE [MM]	IN PACKAGE
B100K000-G1	100 PCS X 1MM	1
B100K000-G2	100 PCS X 2MM	1
B200K000-G1	200 PCS X 1MM	1
B200K000-G2	200 PCS X 2MM	1

Clips

PRODUCT NUMBER	QUANTITY	IN PACKAGE
B000K050	50	1
B000K100	100	1

Wedges

PRODUCT NUMBER	QUANTITY	IN PACKAGE
P050	50	1
P100	100	1

Anti-scratch pads

PRODUCT NUMBER	MATERIAL	IN PACKAGE
OBK001	(METAL)	1
OBK002	(PLASTIC)	1

Metal and plastic pliers





ErgoFast
LIMITED EDITION 2022

ErgoSoft
LIMITED EDITION 2022

Premium Gold Line
LIMITED EDITION 2022

Premium Silver Line
LIMITED EDITION 2022

Premium Max Pro
LIMITED EDITION 2022

SKIMMING BLADES

PREMIUM ERGOPLANE GOLD LINE 0,3MM

SKIMMING BLADES GOLD LINE



PRODUCT NUMBER	DIMENSIONS [MM]	IN PACKAGE
1239150G3PG	150x0,3	1
1239250G3PG	250x0,3	1
1239400G3PG	400x0,3	1
1239600G3PG	600x0,3	1
1239800G3PG	800x0,3	1
12391000G3PG	1000x0,3	1
12391250G3PG	1250x0,3	1
12391500G3PG	1500x0,3	1

Hardened gold stainless steel. Black aluminium profile. Super Flex replaceable blade 0,3mm thick.

ERGOPLANE BLADES GOLD LINE 0,3MM



PRODUCT NUMBER	DIMENSIONS [MM]	IN PACKAGE
1239150GB3PG	150x0,3	1
1239250GB3PG	250x0,3	1
1239400GB3PG	400x0,3	1
1239600GB3PG	600x0,3	1
1239800GB3PG	800x0,3	1
12391000GB3PG	1000x0,3	1
12391250GB3PG	1250x0,3	1
12391500GB3PG	1500x0,3	1

Hardened gold stainless steel. Super Flex replaceable blade 0,3mm thick.

PREMIUM ERGOPLANE SILVER LINE 0,4MM

SKIMMING BLADES SILVER LINE



PRODUCT NUMBER	DIMENSIONS [MM]	IN PACKAGE
1239150G4PS	150x0,4	1
1239250G4PS	250x0,4	1
1239400G4PS	400x0,4	1
1239600G4PS	600x0,4	1
1239800G4PS	800x0,4	1
12391000G4PS	1000x0,4	1
12391250G4PS	1250x0,4	1
12391500G4PS	1500x0,4	1

Cold rolled silver stainless steel. Black aluminium profile.
Flex replaceable blade 0,4mm thick.

ERGOPLANE BLADES SILVER LINE 0,4MM



PRODUCT NUMBER	DIMENSIONS [MM]	IN PACKAGE
1239150GB4PS	150x0,4	1
1239250GB4PS	250x0,4	1
1239400GB4PS	400x0,4	1
1239600GB4PS	600x0,4	1
1239800GB4PS	800x0,4	1
12391000GB4PS	1000x0,4	1
12391250GB4PS	1250x0,4	1
12391500GB4PS	1500x0,4	1

Cold rolled silver stainless steel.
Flex replaceable blade 0,4mm thick.

PREMIUM ERGOPLANE MAX PRO LINE 0,65MM

SKIMMING BLADES ERGOPLANE MAX PRO LINE



PRODUCT NUMBER	DIMENSIONS [MM]	IN PACKAGE
1239150G7PM	150x0,65	1
1239250G7PM	250x0,65	1
1239400G7PM	400x0,65	1
1239600G7PM	600x0,65	1
1239800G7PM	800x0,65	1
12391000G7PM	1000x0,65	1
12391250G7PM	1250x0,65	1
12391500G7PM	1500x0,65	1

Hardened gold stainless steel. Black aluminium profile. Strong replaceable blade 0,65mm thick.

ERGOPLANE BLADES MAX PRO LINE TO,65MM



PRODUCT NUMBER	DIMENSIONS [MM]	IN PACKAGE
1239150GB7PM	150x0,65	1
1239250GB7PM	250x0,65	1
1239400GB7PM	400x0,65	1
1239600GB7PM	600x0,65	1
1239800GB7PM	800x0,65	1
12391000GB7PM	1000x0,65	1
12391250GB7PM	1250x0,65	1
12391500GB7PM	1500x0,65	1

Hardened gold stainless steel. Strong replaceable blade 0,65mm thick.

ERGOPLANE 0,3MM

SKIMMING BLADES ERGOPLANE

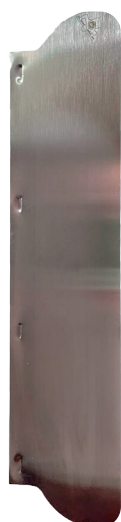


PRODUCT NUMBER	DIMENSIONS [MM]	IN PACKAGE
1239150G3	150x0,3	1
1239250G3	250x0,3	1
1239400G3	400x0,3	1
1239600G3	600x0,3	1
1239800G3	800x0,3	1
12391000G3	1000x0,3	1
12391250G3	1250x0,3	1
12391500G3	1500x0,3	1

Silver aluminium profile.

Super Flex replaceable stainless steel blade 0,3mm thick.

ERGOPLANE BLADES 0,3MM



PRODUCT NUMBER	DIMENSIONS [MM]	IN PACKAGE
1239150GB3	150x0,3	1
1239250GB3	250x0,3	1
1239400GB3	400x0,3	1
1239600GB3	600x0,3	1
1239800GB3	800x0,3	1
12391000GB3	1000x0,3	1
12391250GB3	1250x0,3	1
12391500GB3	1500x0,3	1

Super Flex replaceable stainless steel blade 0,3mm thick.

ERGOPLANE 0,5MM

SKIMMING BLADES ERGOPLANE



PRODUCT NUMBER	DIMENSIONS [MM]	IN PACKAGE
1239150G5	150x0,5	1
1239250G5	250x0,5	1
1239400G5	400x0,5	1
1239600G5	600x0,5	1
1239800G5	800x0,5	1
12391000G5	1000x0,5	1
12391250G5	1250x0,5	1
12391500G5	1500x0,5	1

Silver aluminium profile.
Flex replaceable stainless steel blade 0,5mm thick.

ERGOPLANE BLADES 0,5MM



PRODUCT NUMBER	DIMENSIONS [MM]	IN PACKAGE
1239150GB5	150x0,5	1
1239250GB5	250x0,5	1
1239400GB5	400x0,5	1
1239600GB5	600x0,5	1
1239800GB5	800x0,5	1
12391000GB5	1000x0,5	1
12391250GB5	1250x0,5	1
12391500GB5	1500x0,5	1

Flex replaceable stainless steel blade 0,5mm thick.

0,5MM NOTCHED BLADES

Hardened stainless steel.

Flex replaceable blade 0,5mm thick.



PRODUCT NUMBER	DIMENSIONS [MM]	IN PACKAGE
1239150GB5E4	150x0,5	1
1239250GB5E4	250x0,5	1
1239400GB5E4	400x0,5	1
1239600GB5E4	600x0,5	1
1239800GB5E4	800x0,5	1
12391000GB5E4	1000x0,5	1
12391250GB5E4	1250x0,5	1
12391500GB5E4	1500x0,5	1

PRODUCT NUMBER	DIMENSIONS [MM]	IN PACKAGE
1239150GB5E6	150x0,5	1
1239250GB5E6	250x0,5	1
1239400GB5E6	400x0,5	1
1239600GB5E6	600x0,5	1
1239800GB5E6	800x0,5	1
12391000GB5E6	1000x0,5	1
12391250GB5E6	1250x0,5	1
12391500GB5E6	1500x0,5	1

PRODUCT NUMBER	DIMENSIONS [MM]	IN PACKAGE
1239150GB5E8	150x0,5	1
1239250GB5E8	250x0,5	1
1239400GB5E8	400x0,5	1
1239600GB5E8	600x0,5	1
1239800GB5E8	800x0,5	1
12391000GB5E8	1000x0,5	1
12391250GB5E8	1250x0,5	1
12391500GB5E8	1500x0,5	1

PRODUCT NUMBER	DIMENSIONS [MM]	IN PACKAGE
1239150GB5E10	150x0,5	1
1239250GB5E10	250x0,5	1
1239400GB5E10	400x0,5	1
1239600GB5E10	600x0,5	1
1239800GB5E10	800x0,5	1
12391000GB5E10	1000x0,5	1
12391250GB5E10	1250x0,5	1
12391500GB5E10	1500x0,5	1

PRODUCT NUMBER	DIMENSIONS [MM]	IN PACKAGE
1239150GB5E12	150x0,5	1
1239250GB5E12	250x0,5	1
1239400GB5E12	400x0,5	1
1239600GB5E12	600x0,5	1
1239800GB5E12	800x0,5	1
12391000GB5E12	1000x0,5	1
12391250GB5E12	1250x0,5	1
12391500GB5E12	1500x0,5	1

PRODUCT NUMBER	DIMENSIONS [MM]	IN PACKAGE
1239150GB5FRD	150x0,5	1
1239250GB5FRD	250x0,5	1
1239400GB5FRD	400x0,5	1
1239600GB5FRD	600x0,5	1
1239800GB5FRD	800x0,5	1
12391000GB5FRD	1000x0,5	1
12391250GB5FRD	1250x0,5	1
12391500GB5FRD	1500x0,5	1

ERGOSOFT 0,3MM

SKIMMING BLADES ERGOSOFT



PRODUCT NUMBER	DIMENSIONS [MM]	IN PACKAGE
1239150G3S	150x0,3	1
1239250G3S	250x0,3	1
1239400G3S	400x0,3	1
1239600G3S	600x0,3	1
1239800G3S	800x0,3	1
12391000G3S	1000x0,3	1
12391250G3S	1250x0,3	1
12391500G3S	1500x0,3	1

PVC profile.

Super Flex replaceable stainless steel blade 0,3mm thick.

ERGOSOFT BLADES 0,3MM



PRODUCT NUMBER	DIMENSIONS [MM]	IN PACKAGE
1239150GB3S	150x0,3	1
1239250GB3S	250x0,3	1
1239400GB3S	400x0,3	1
1239600GB3S	600x0,3	1
1239800GB3S	800x0,3	1
12391000GB3S	1000x0,3	1
12391250GB3S	1250x0,3	1
12391500GB3S	1500x0,3	1

Super Flex replaceable stainless steel blade 0,3mm thick.

ERGOSOFT 0,5MM

SKIMMING BLADES ERGOSOFT



PRODUCT NUMBER	DIMENSIONS [MM]	IN PACKAGE
1239150G5S	150x0,5	1
1239250G5S	250x0,5	1
1239400G5S	400x0,5	1
1239600G5S	600x0,5	1
1239800G5S	800x0,5	1
12391000G5S	1000x0,5	1
12391250G5S	1250x0,5	1
12391500G5S	1500x0,5	1

PVC profile.

Super Flex replaceable stainless steel blade 0,5mm thick.

ERGOSOFT BLADES 0,5MM



PRODUCT NUMBER	DIMENSIONS [MM]	IN PACKAGE
1239150GB5S	150x0,5	1
1239250GB5S	250x0,5	1
1239400GB5S	400x0,5	1
1239600GB5S	600x0,5	1
1239800GB5S	800x0,5	1
12391000GB5S	1000x0,5	1
12391250GB5S	1250x0,5	1
12391500GB5S	1500x0,5	1

Super Flex replaceable stainless steel blade 0,5mm thick.

0,5MM NOTCHED BLADES

Hardened stainless steel.

Flex replaceable blade 0,5mm thick.

PRODUCT NUMBER	DIMENSIONS [MM]	IN PACKAGE
1239150GB5E4	150x0,5	1
1239250GB5E4S	250x0,5	1
1239400GB5E4S	400x0,5	1
1239600GB5E4S	600x0,5	1
1239800GB5E4S	800x0,5	1
12391000GB5E4S	1000x0,5	1
12391250GB5E4S	1250x0,5	1
12391500GB5E4S	1500x0,5	1

PRODUCT NUMBER	DIMENSIONS [MM]	IN PACKAGE
1239150GB5E6S	150x0,5	1
1239250GB5E6S	250x0,5	1
1239400GB5E6S	400x0,5	1
1239600GB5E6S	600x0,5	1
1239800GB5E6S	800x0,5	1
12391000GB5E6S	1000x0,5	1
12391250GB5E6S	1250x0,5	1
12391500GB5E6S	1500x0,5	1

PRODUCT NUMBER	DIMENSIONS [MM]	IN PACKAGE
1239150GB5E8S	150x0,5	1
1239250GB5E8S	250x0,5	1
1239400GB5E8S	400x0,5	1
1239600GB5E8S	600x0,5	1
1239800GB5E8S	800x0,5	1
12391000GB5E8S	1000x0,5	1
12391250GB5E8S	1250x0,5	1
12391500GB5E8S	1500x0,5	1



PRODUCT NUMBER	DIMENSIONS [MM]	IN PACKAGE
1239150GB5E10S	150x0,5	1
1239250GB5E10S	250x0,5	1
1239400GB5E10S	400x0,5	1
1239600GB5E10S	600x0,5	1
1239800GB5E10S	800x0,5	1
12391000GB5E10S	1000x0,5	1
12391250GB5E10S	1250x0,5	1
12391500GB5E10S	1500x0,5	1

PRODUCT NUMBER	DIMENSIONS [MM]	IN PACKAGE
1239150GB5E12S	150x0,5	1
1239250GB5E12S	250x0,5	1
1239400GB5E12S	400x0,5	1
1239600GB5E12S	600x0,5	1
1239800GB5E12S	800x0,5	1
12391000GB5E12S	1000x0,5	1
12391250GB5E12S	1250x0,5	1
12391500GB5E12S	1500x0,5	1

PRODUCT NUMBER	DIMENSIONS [MM]	IN PACKAGE
1239150GB5FRDS	150x0,5	1
1239250GB5FRDS	250x0,5	1
1239400GB5FRDS	400x0,5	1
1239600GB5FRDS	600x0,5	1
1239800GB5FRDS	800x0,5	1
12391000GB5FRDS	1000x0,5	1
12391250GB5FRDS	1250x0,5	1
12391500GB5FRDS	1500x0,5	1



ERGOPLAST 0,3MM

SKIMMING BLADES ERGOPLAST



PRODUCT NUMBER	DIMENSIONS [MM]	IN PACKAGE
1239150G3P	150x0,3	1
1239250G3P	250x0,3	1
1239400G3P	400x0,3	1
1239600G3P	600x0,3	1
1239800G3P	800x0,3	1
12391000G3P	1000x0,3	1
12391250G3P	1250x0,3	1
12391500G3P	1500x0,3	1

PVC profile.

Super Flex replaceable stainless steel blade 0,3mm thick.

ERGOPLAST BLADES 0,3MM



PRODUCT NUMBER	DIMENSIONS [MM]	IN PACKAGE
1239150GB3P	150x0,3	1
1239250GB3P	250x0,3	1
1239400GB3P	400x0,3	1
1239600GB3P	600x0,3	1
1239800GB3P	800x0,3	1
12391000GB3P	1000x0,3	1
12391250GB3P	1250x0,3	1
12391500GB3P	1500x0,3	1

Super Flex replaceable stainless steel blade 0,3mm thick.

ERGOPLAST 0,5MM

SKIMMING BLADES ERGOPLAST



PRODUCT NUMBER	DIMENSIONS [MM]	IN PACKAGE
1239150G5P	150x0,5	1
1239250G5P	250x0,5	1
1239400G5P	400x0,5	1
1239600G5P	600x0,5	1
1239800G5P	800x0,5	1
12391000G5P	1000x0,5	1
12391250G5P	1250x0,5	1
12391500G5P	1500x0,5	1

PVC profile.

Super Flex replaceable stainless steel blade 0,5mm thick.

ERGOPLAST BLADES 0,5MM



PRODUCT NUMBER	DIMENSIONS [MM]	IN PACKAGE
1239150GB5P	150x0,5	1
1239250GB5P	250x0,5	1
1239400GB5P	400x0,5	1
1239600GB5P	600x0,5	1
1239800GB5P	800x0,5	1
12391000GB5P	1000x0,5	1
12391250GB5P	1250x0,5	1
12391500GB5P	1500x0,5	1

Super Flex replaceable stainless steel blade 0,5mm thick.

0,5MM NOTCHED BLADES

Hardened stainless steel.

Flex replaceable blade 0,5mm thick.

PRODUCT NUMBER	DIMENSIONS [MM]	IN PACKAGE
1239150GB5E4P	150x0,5	1
1239250GB5E4P	250x0,5	1
1239400GB5E4P	400x0,5	1
1239600GB5E4P	600x0,5	1
1239800GB5E4P	800x0,5	1
12391000GB5E4P	1000x0,5	1
12391250GB5E4P	1250x0,5	1
12391500GB5E4P	1500x0,5	1

PRODUCT NUMBER	DIMENSIONS [MM]	IN PACKAGE
1239150GB5E6P	150x0,5	1
1239250GB5E6P	250x0,5	1
1239400GB5E6P	400x0,5	1
1239600GB5E6P	600x0,5	1
1239800GB5E6P	800x0,5	1
12391000GB5E6P	1000x0,5	1
12391250GB5E6P	1250x0,5	1
12391500GB5E6P	1500x0,5	1

PRODUCT NUMBER	DIMENSIONS [MM]	IN PACKAGE
1239150GB5E8P	150x0,5	1
1239250GB5E8P	250x0,5	1
1239400GB5E8P	400x0,5	1
1239600GB5E8P	600x0,5	1
1239800GB5E8P	800x0,5	1
12391000GB5E8P	1000x0,5	1
12391250GB5E8P	1250x0,5	1
12391500GB5E8P	1500x0,5	1



PRODUCT NUMBER	DIMENSIONS [MM]	IN PACKAGE
1239150GB5E10P	150x0,5	1
1239250GB5E10P	250x0,5	1
1239400GB5E10P	400x0,5	1
1239600GB5E10P	600x0,5	1
1239800GB5E10P	800x0,5	1
12391000GB5E10P	1000x0,5	1
12391250GB5E10P	1250x0,5	1
12391500GB5E10P	1500x0,5	1

PRODUCT NUMBER	DIMENSIONS [MM]	IN PACKAGE
1239150GB5E12P	150x0,5	1
1239250GB5E12P	250x0,5	1
1239400GB5E12P	400x0,5	1
1239600GB5E12P	600x0,5	1
1239800GB5E12P	800x0,5	1
12391000GB5E12P	1000x0,5	1
12391250GB5E12P	1250x0,5	1
12391500GB5E12P	1500x0,5	1

PRODUCT NUMBER	DIMENSIONS [MM]	IN PACKAGE
1239150GB5FRDP	150x0,5	1
1239250GB5FRDP	250x0,5	1
1239400GB5FRDP	400x0,5	1
1239600GB5FRDP	600x0,5	1
1239800GB5FRDP	800x0,5	1
12391000GB5FRDP	1000x0,5	1
12391250GB5FRDP	1250x0,5	1
12391500GB5FRDP	1500x0,5	1



EXTENDABLE HANDLE & ADAPTER



PRODUCT NUMBER	DIMENSIONS [MM]	IN PACKAGE
205401	120-220	6
205404	95-160	6

Fiberglass extendable handle to ergo plane.



PRODUCT NUMBER	DIMENSIONS [MM]	IN PACKAGE
205402	Adapter for ERGOPLANE	1
205402P	Adapter for ERGTOPLAST	

Skimming blades adapter.



PRODUCT NUMBER	DIMENSIONS [MM]	IN PACKAGE
205407	-	1

Universal thread adapter.



PRODUCT NUMBER	DIMENSIONS [MM]	IN PACKAGE
205406	-	1

Universal thread adapter + mud roller 2K adapter.

MUD ROLLERS



PRODUCT NUMBER	DIMENSIONS [MM]	IN PACKAGE
250100	100	10
250180	180	10
250230	230	10
250300	300	10

Mud roller.



PRODUCT NUMBER	DIMENSIONS [MM]	IN PACKAGE
250180R-1K	180	10
250230R-1K	230	10

1K mud roller handle.



PRODUCT NUMBER	DIMENSIONS [MM]	IN PACKAGE
250300R-1K	300	10

1K mud roller handle.



PRODUCT NUMBER	DIMENSIONS [MM]	IN PACKAGE
250100-2K	100	10
250180-2K	180	10
250230-2K	230	10
250300-2K	300	10




2K mud roller handle.







PRODUCT NUMBER	DIMENSIONS [MM]	IN PACKAGE
205225-2	279x100x0,3	1





Facade putty adapter.





OPTIONAL KITS YOU CAN ASSEMBLE YOURSELF:

1)  +  +  SKIMMING BLADE

2)  +  MUD ROLLER

3)  +  MUD ROLLER 2K

4)  +  +  + 

SKIMMING BLADES SET IN RED CASE

SET WERGR CONTAINS:

SKIMMING BLADES 250MM, 400MM, 600MM, 800MM, 1000MM

TELESCOPIC STICK (205404) , ADAPTER (205402), HAWK(126713-2K), PUTTY KNIVES WITH BIT(124015-2KB), MUD ROLLER (250230) AND HANDLE (250230R-2K).



EXAMPLE PHOTO OF WERGR-G3S

PRODUCT NUMBER	LINE, BLADE THICKNESS [MM]	IN PACKAGE
WERGR	EMPTY RED CASE	1
WERGR-G3	ERGOPLANE 0,3	1
WERGR-G3P	ERGOPLAST 0,3	1
WERGR-G5	ERGOPLANE 0,5	1
WERGR-G5P	ERGOPLAST 0,5	1
WERGR-G3S	ERGOSOFT 0,3	1
WERGR-G5S	ERGOSOFT 0,5	1

SKIMMING BLADES SET IN CASE

SET WERGD CONTAINS:

SKIMMING BLADES 250MM, 400MM, 600MM, 800MM, 1000MM

TELESCOPIC STICK (205404) , ADAPTER (205402), MUD ROLLER (250230) AND HANDLE (250230R)



EXAMPLE PHOTO OF WERGD-G3P

PRODUCT NUMBER	LINE, BLADE THICKNESS [MM]	IN PACKAGE
WERGD	EMPTY BLACK CASE	1
WERGD-G3PG	PREMIUM GOLD 0,3	1
WERGD-G4PS	PREMIUM SILVER 0,4	1
WERGD-G7PM	PREMIUM MAX PRO 0,7	1
WERGD-G3	ERGOPLANE 0,3	1
WERGD-G5	ERGOPLANE 0,5	1
WERGD-G3S	ERGOSOFT 0,3	1
WERGD-G5S	ERGOSOFT 0,5	1
WERGD-G3P	ERGOPLAST 0,3	1
WERGD-G5P	ERGOPLAST 0,5	1

SKIMMING BLADESET SET IN CASE

SET WERGM CONTAINS:
 SKIMMING BLADES 250MM, 400MM, 600MM, 800MM
 MUD ROLLER (250230) AND HANDLE (250230R)



EXAMPLE PHOTO OF WERGM-G3P

PRODUCT NUMBER	SERIES, BLADE THICKNESS [MM]	IN PACKAGE
WERGM	EMPTY BLACK SMALL CASE	1
WERGM-G3PG	PREMIUM GOLD 0,3	1
WERGM-G4PS	PREMIUM SILVER 0,4	1
WERGM-G7PM	PREMIUM MAX PRO 0,7	1
WERGM-G3	ERGOPLANE 0,3	1
WERGM-G5	ERGOPLANE 0,5	1
WERGM-G3S	ERGOSOFT 0,3	1
WERGM-G5S	ERGOSOFT 0,5	1
WERGM-G3P	ERGOPLAST 0,3	1
WERGM-G5P	ERGOPLAST 0,5	1

FACADE TAPING KNIVES



PRODUCT NUMBER	DIMENSIONS [MM]	IN PACKAGE
124916-2K	160x100x0,5	10
124918-2K	180x100x0,5	10
124920-2K	200x100x0,5	10
124922-2K	220x100x0,5	10
124930-2K	300x100x0,5	10

Stainless steel facade putty „feniks”. Blade thickness 0,5mm. Two - component handle.



PRODUCT NUMBER	DIMENSIONS [MM]	IN PACKAGE
123917-2K	170x60x0,5	10
123922-2K	220x60x0,5	10
123928-2K	280x60x0,5	10
123938-2K	380x60x0,5	10
123948-2K	480x60x0,5	10
123958-2K	580x60x0,5	10
123968-2K	680x60x0,5	10

Stainless steel facade putty. Blade width 60mm, thickness 0,5mm. Two-component handle.



PRODUCT NUMBER	DIMENSIONS [MM]	IN PACKAGE
123617-2K	170x100x0,5	10
123622-2K	220x100x0,5	10
123628-2K	280x100x0,5	10
123638-2K	380x100x0,5	10
123648-2K	480x100x0,5	10
123658-2K	580x100x0,5	10
123668-2K	680x100x0,5	10

Stainless steel facade putty. Blade width 100mm, thickness 0,5mm. Two-component handle.



PRODUCT NUMBER	DIMENSIONS [MM]	IN PACKAGE
123917-K	170x60x0,5	10
123922-K	220x60x0,5	10
123928-K	280x60x0,5	10
123938-K	380x60x0,5	10
123948-K	480x60x0,5	10
123958-K	580x60x0,5	10
123968-K	680x60x0,5	10

Stainless steel facade putty. Blade width 60mm, thickness 0,5mm. Cork handle.

FACADE TAPING KNIVES



PRODUCT NUMBER	DIMENSIONS [MM]	IN PACKAGE
123617-K	170x100x0,5	10
123622-K	220x100x0,5	10
123628-K	280x100x0,5	10
123638-K	380x100x0,5	10
123648-K	480x100x0,5	10
123658-K	580x100x0,5	10
123668-K	680x100x0,5	10

Stainless steel facade putty. Blade width 100mm, thickness 0,5mm. Cork handle.



PRODUCT NUMBER	DIMENSIONS [MM]	IN PACKAGE
123917-LS	170x60x0,5	10
123922-LS	220x60x0,5	10
123928-LS	280x60x0,5	10
123938-LS	380x60x0,5	10
123948-LS	480x60x0,5	10
123958-LS	580x60x0,5	10
123968-LS	680x60x0,5	10

Stainless steel facade putty. Blade width 60mm, thickness 0,5mm. Natural leather handle - vintage.



PRODUCT NUMBER	DIMENSIONS [MM]	IN PACKAGE
123617-LS	170x100x0,5	10
123622-LS	220x100x0,5	10
123628-LS	280x100x0,5	10
123638-LS	380x100x0,5	10
123648-LS	480x100x0,5	10
123658-LS	580x100x0,5	10
123668-LS	680x100x0,5	10

Stainless steel facade putty. Blade width 100mm, thickness 0,5mm. Natural leather handle - vintage.



FORGED TROWEL HARDENED STEEL



FORGED JOIN POINTING TROWELS HARDEED STEEL



PRODUCT NUMBER	DIMENSIONS [IN]	IN PACKAGE
025106F-LSS	6	1
025110F-LSS	10	1
025112F-LSS	12	1

One pieced forged brick trowel, hardened carbon steel.
Natural leather handle - alcantara.



PRODUCT NUMBER	DIMENSIONS [IN]	IN PACKAGE
025106F-LS	6	1
025110F-LS	10	1
025112F-LS	12	1

One pieced forged brick trowel, hardened carbon steel.
Natural leather handle - vintage.



PRODUCT NUMBER	DIMENSIONS [IN]	IN PACKAGE
025106F-K	6	1
025110F-K	10	1
025112F-K	12	1

One pieced forged brick trowel, hardened carbon steel.
Natural cork handle.



PRODUCT NUMBER	DIMENSIONS [IN]	IN PACKAGE
025106F-2K	6	1
025110F-2K	10	1
025112F-2K	12	1

One pieced forged brick trowel, hardened carbon steel.
Two-component handle.

FORGED POINTING TROWELS HARDENED STEEL



PRODUCT NUMBER	DIMENSIONS [IN]	IN PACKAGE
025313F-LSS	13	1
025315F-LSS	15	1
025318F-LSS	18	1

One pieced forged brick trowel, hardened carbon steel.
Natural leather handle - alcantara.



PRODUCT NUMBER	DIMENSIONS [IN]	IN PACKAGE
025313F-LS	13	1
025315F-LS	15	1
025318F-LS	18	1

One pieced forged brick trowel, hardened carbon steel.
Natural leather handle - vintage.



PRODUCT NUMBER	DIMENSIONS [IN]	IN PACKAGE
025313F-K	13	1
025315F-K	15	1
025318F-K	18	1

One pieced forged brick trowel, hardened carbon steel.
Natural cork handle.



PRODUCT NUMBER	DIMENSIONS [IN]	IN PACKAGE
025313F-2K	13	1
025315F-2K	15	1
025318F-2K	18	1

One pieced forged brick trowel, hardened carbon steel.
Two-component handle.

FORGED MARGIN TROWELS HARDENED STEEL



PRODUCT NUMBER	DIMENSIONS [IN]	IN PACKAGE
025413F-LSS	13	1
025415F-LSS	15	1
025420F-LSS	20	1

One pieced forged brick trowel, hardened carbon steel.
Natural leather handle - alcantara.



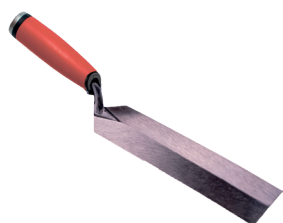
PRODUCT NUMBER	DIMENSIONS [IN]	IN PACKAGE
025413F-LS	13	1
025415F-LS	15	1
025420F-LS	20	1

One pieced forged brick trowel, hardened carbon steel.
Natural leather handle - vintage.



PRODUCT NUMBER	DIMENSIONS [IN]	IN PACKAGE
025413F-K	13	1
025415F-K	15	1
025420F-K	20	1

One pieced forged brick trowel, hardened carbon steel.
Natural cork handle.



PRODUCT NUMBER	DIMENSIONS [IN]	IN PACKAGE
025413F-2K	13	1
025415F-2K	15	1
025420F-2K	20	1

One pieced forged brick trowel, hardened carbon steel.
Two-component handle.

FORGED LARGE BRICK TROWELS LONDON HARDENED STEEL



PRODUCT NUMBER	DIMENSIONS [IN]	IN PACKAGE
026254F-LSS	254	1
026279F-LSS	279	1
026305F-LSS	305	1

One pieced forged brick trowel, hardened carbon steel.
Natural leather handle - alcantara.



PRODUCT NUMBER	DIMENSIONS [IN]	IN PACKAGE
026254F-LS	254	1
026279F-LS	279	1
026305F-LS	305	1

One pieced forged brick trowel, hardened carbon steel.
Natural leather handle - vintage.



PRODUCT NUMBER	DIMENSIONS [IN]	IN PACKAGE
026254F-K	254	1
026279F-K	279	1
026305F-K	305	1

One pieced forged brick trowel, hardened carbon steel.
Natural cork handle.



PRODUCT NUMBER	DIMENSIONS [IN]	IN PACKAGE
026254F-2K	254	1
026279F-2K	279	1
026305F-2K	305	1

One pieced forged brick trowel, hardened carbon steel.
Two-component handle.

FORGED LARGE BRICK TROWELS PHILADELPHIA HARDENED STEEL



PRODUCT NUMBER	DIMENSIONS [IN]	IN PACKAGE
027254F-LSS	254	1
027279F-LSS	279	1
027305F-LSS	305	1

One pieced forged brick trowel, hardened carbon steel.
Natural leather handle - alcantara.



PRODUCT NUMBER	DIMENSIONS [IN]	IN PACKAGE
027254F-LS	254	1
027279F-LS	279	1
027305F-LS	305	1

One pieced forged brick trowel, hardened carbon steel.
Natural leather handle - vintage.



PRODUCT NUMBER	DIMENSIONS [IN]	IN PACKAGE
027254F-K	254	1
027279F-K	279	1
027305F-K	305	1

One pieced forged brick trowel, hardened carbon steel.
Natural cork handle.



PRODUCT NUMBER	DIMENSIONS [IN]	IN PACKAGE
027254F-2K	254	1
027279F-2K	279	1
027305F-2K	305	1

One pieced forged brick trowel, hardened carbon steel.
Two-component handle.

STANDARD TROWELS



STANDARD TROWELS



PRODUCT NUMBER	DIMENSIONS [MM]	IN PACKAGE
127128-L	280x130x0,7	10

Stainless steel blade 0,7mm thick. Leather handle.



PRODUCT NUMBER	DIMENSIONS [MM]	IN PACKAGE
127128-K	280x130x0,7	10

Stainless steel blade 0,7mm thick. Cork handle.



PRODUCT NUMBER	DIMENSIONS [MM]	IN PACKAGE
127128-2KO	280x130x0,7	10

Stainless steel blade 0,7mm thick. Two-component handle.



PRODUCT NUMBER	DIMENSIONS [MM]	IN PACKAGE
127128-SG	280x130x0,7	10

Stainless steel blade 0,7mm thick. Two-component handle-SG type.



PRODUCT NUMBER	DIMENSIONS [MM]	IN PACKAGE
127128	280x130x0,7	10

Stainless steel blade 0,7mm thick. Wooden handle.

STANDARD NOTCHED TROWELS



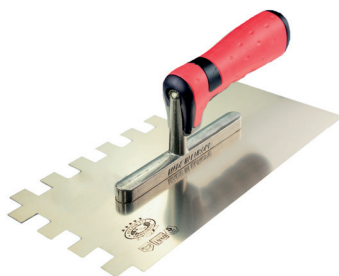
PRODUCT NUMBER	DIMENSIONS [MM]	IN PACKAGE
127128E4-L	280x130x0,7	10
127128E6-L	280x130x0,7	10
127128E8-L	280x130x0,7	10
127128E10-L	280x130x0,7	10
127128E12-L	280x130x0,7	10
127128-LFRM	280x130x0,7	10
127128-LFRD	280x130x0,7	10
127128EO-L	280x130x0,7	10

Stainless steel notched blade 0,7mm thick. Leather handle.



PRODUCT NUMBER	DIMENSIONS [MM]	IN PACKAGE
127128E4-K	280x130x0,7	10
127128E6-K	280x130x0,7	10
127128E8-K	280x130x0,7	10
127128E10-K	280x130x0,7	10
127128E12-K	280x130x0,7	10
127128-KFRM	280x130x0,7	10
127128-KFRD	280x130x0,7	10
127128EO-K	280x130x0,7	10

Stainless steel notched blade 0,7mm thick. Cork handle.



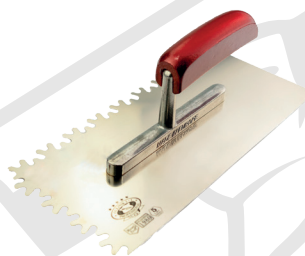
PRODUCT NUMBER	DIMENSIONS [MM]	IN PACKAGE
127128E4-2KO	280x130x0,7	10
127128E6-2KO	280x130x0,7	10
127128E8-2KO	280x130x0,7	10
127128E10-2KO	280x130x0,7	10
127128E12-2KO	280x130x0,7	10
127128-2KOFRM	280x130x0,7	10
127128-2KOFRD	280x130x0,7	10
127128EO-2KO	280x130x0,7	10

Stainless steel notched blade 0,7mm thick. Two-component handle.



PRODUCT NUMBER	DIMENSIONS [MM]	IN PACKAGE
127128E4-SG	280x130x0,7	10
127128E6-SG	280x130x0,7	10
127128E8-SG	280x130x0,7	10
127128E10-SG	280x130x0,7	10
127128E12-SG	280x130x0,7	10
127128-SGFRM	280x130x0,7	10
127128-SGFRD	280x130x0,7	10
127128EO-SG	280x130x0,7	10

Stainless steel notched blade 0,7mm thick. Two-component SG-type handle.



PRODUCT NUMBER	DIMENSIONS [MM]	IN PACKAGE
127128E4	280x130x0,7	10
127128E6	280x130x0,7	10
127128E8	280x130x0,7	10
127128E10	280x130x0,7	10
127128E12	280x130x0,7	10
127128-FRM	280x130x0,7	10
127128-FRD	280x130x0,7	10
127128EO	280x130x0,7	10

Stainless steel notched blade 0,7mm thick. Wooden handle.



PRODUCT NUMBER	DIMENSIONS [MM]	IN PACKAGE
127930-L	300x120x0,65	10
127128-K	300x120x0,65	10
127128-2KO	300x120x0,65	10
127128-SG	300x120x0,65	10

Stainless hardened steel curved blade 0,65mm thick. Handle: leather, natural cork, two-component, SG-type.

STANDARD VENETIAN TROWELS



PRODUCT NUMBER	DIMENSIONS [MM]	IN PACKAGE
126520-L	200x80	10
126524-L	240x90x110	10
126528-L	280x90x110	10

Stainless steel blade 0,7mm thick. Leather handle.



PRODUCT NUMBER	DIMENSIONS [MM]	IN PACKAGE
126520-K	200x80	10
126524-K	240x90x110	10
126528-K	280x90x110	10

Stainless steel blade 0,7mm thick. Cork handle.



PRODUCT NUMBER	DIMENSIONS [MM]	IN PACKAGE
126520-2KO	200x80	10
126524-2KO	240x90x110	10
126528-2KO	280x90x110	10

Stainless steel blade 0,7mm thick. Twocomponent handle.



PRODUCT NUMBER	DIMENSIONS [MM]	IN PACKAGE
126520-SG	200x80	10
126524-SG	240x90x110	10
126528-SG	280x90x110	10

Stainless steel blade 0,7mm thick.
Two-component handle -SG type.



PRODUCT NUMBER	DIMENSIONS [MM]	IN PACKAGE
126520	200x80	10
126524	240x90x110	10
126528	280x90x110	10

Stainless steel blade 0,7mm thick. Wooden handle.

"SUPER PROFI" TROWELS



PRODUCT NUMBER	DIMENSIONS [MM]	IN PACKAGE
127730-L	280X130X0,7	10

Stainless steel blade thickness 0,7mm. Leather handle.



PRODUCT NUMBER	DIMENSIONS [MM]	IN PACKAGE
127730-K	280X130X0,7	10

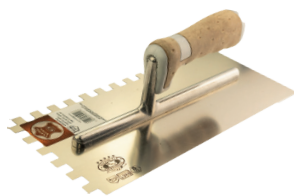
Stainless steel blade thickness 0,7mm. Cork handle.



PRODUCT NUMBER	DIMENSIONS [MM]	IN PACKAGE
127730-2KO	280X130X0,7	10

Stainless steel blade thickness 0,7mm. Twocomponent handle.

"SUPER PROFI" NOTCHED TROWELS



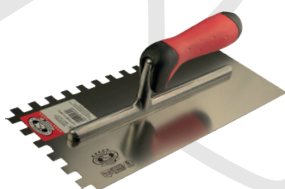
PRODUCT NUMBER	DIMENSIONS [MM]	IN PACKAGE
127730E4-L	280x130x0,7	10
127730E6-L	280x130x0,7	10
127730E8-L	280x130x0,7	10
127730E10-L	280x130x0,7	10
127730E12-L	280x130x0,7	10

Stainless steel notched blade thickness 0,7mm. Leather handle.



PRODUCT NUMBER	DIMENSIONS [MM]	IN PACKAGE
127730E4-K	280x130x0,7	10
127730E6-K	280x130x0,7	10
127730E8-K	280x130x0,7	10
127730E10-K	280x130x0,7	10
127730E12-K	280x130x0,7	10

Stainless steel notched blade thickness 0,7mm. Leather handle.



PRODUCT NUMBER	DIMENSIONS [MM]	IN PACKAGE
127730E4-2KO	280x130x0,7	10
127730E6-2KO	280x130x0,7	10
127730E8-2KO	280x130x0,7	10
127730E10-2KO	280x130x0,7	10
127730E12-2KO	280x130x0,7	10

Stainless steel notched blade thickness 0,7mm. Leather handle.

ADHESIVE TROWELS STAINLESS STEEL "SUPER PROFI"



PRODUCT NUMBER	DIMENSIONS [MM]	IN PACKAGE
127150-2K	480x130x1,2	5

Stainless steel blade 1,2mm thick. Two-component handle.



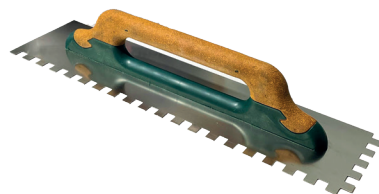
PRODUCT NUMBER	DIMENSIONS [MM]	IN PACKAGE
127150E4-2K	480x130x1,2	5
127150E6-2K	480x130x1,2	5
127150E8-2K	480x130x1,2	5
127150E10-2K	480x130x1,2	5
127150E12-2K	480x130x1,2	5

Stainless steel notched blade 1,2mm thick. Two-component handle.



PRODUCT NUMBER	DIMENSIONS [MM]	IN PACKAGE
127150-K	480x130x1,2	5

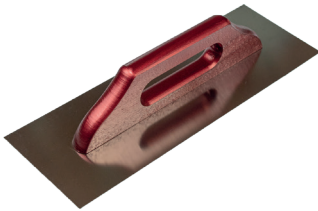
Stainless steel blade 1,2mm thick. Cork handle.



PRODUCT NUMBER	DIMENSIONS [MM]	IN PACKAGE
127150E4-K	480x130x1,2	5
127150E6-K	480x130x1,2	5
127150E8-K	480x130x1,2	5
127150E10-K	480x130x1,2	5
127150E12-K	480x130x1,2	5

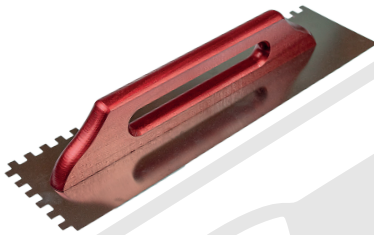
Stainless steel notched blade 1,2mm thick. Cork handle.

ADHESIVE TROWELS STAINLESS STEEL



PRODUCT NUMBER	DIMENSIONS [MM]	IN PACKAGE
127140	380x130x1,2	5
127150	480x130x1,2	5
127160	580x130x1,2	5
127170	680x130x1,2	5

Stainless steel blade 1,2mm thick. Wooden handle.



PRODUCT NUMBER	DIMENSIONS [MM]	IN PACKAGE
127140E4	380x130x1,2	5
127140E6	380x130x1,2	5
127140E8	380x130x1,2	5
127140E10	380x130x1,2	5
127140E12	380x130x1,2	5
127150E4	480x130x1,2	5
127150E6	480x130x1,2	5
127150E8	480x130x1,2	5
127150E10	480x130x1,2	5
127150E12	480x130x1,2	5
127160E4	580x130x1,2	5
127160E6	580x130x1,2	5
127160E8	580x130x1,2	5
127160E10	580x130x1,2	5
127160E12	580x130x1,2	5
127170E4	680x130x1,2	5
127170E6	680x130x1,2	5
127170E8	680x130x1,2	5
127170E10	680x130x1,2	5
127170E12	680x130x1,2	5

Stainless steel notched blade 1,2mm thick. Wood handle.

TRIANGULAR TROWELS SPRING HARDENED STEEL



PRODUCT NUMBER	DIMENSIONS [MM]	IN PACKAGE
021118-L	180	20
021119-L	190	20
021120-L	200	20
021121-L	210	20
021123-L	230	20

Hardened spring steel blade. Grinded leather handle.



PRODUCT NUMBER	DIMENSIONS [MM]	IN PACKAGE
021118-K	180	20
021119-K	190	20
021120-K	200	20
021121-K	210	20
021123-K	230	20

Hardened spring steel blade. Natural cork handle.



PRODUCT NUMBER	DIMENSIONS [MM]	IN PACKAGE
021118-2K	180	20
021119-2K	190	20
021120-2K	200	20
021121-2K	210	20
021123-2K	230	20

Hardened spring steel blade. Two-component handle.



PRODUCT NUMBER	DIMENSIONS [MM]	IN PACKAGE
021118	180	20
021119	190	20
021120	200	20
021121	210	20
021123	230	20

Hardened springsteel blade. Wooden handle.

TRAPEZOID TROWELS - WITH HAMMER



PRODUCT NUMBER	DIMENSIONS [MM]	IN PACKAGE
022214-LSSH	140 (narrow)	20
022216-LSSH	160 (narrow)	20
022218-LSSH	180 (narrow)	20
022114-LSSH	140 (wide)	20
022116-LSSH	160 (wide)	20
022118-LSSH	180 (wide)	20

Hardened spring welded steel blade. Natural leather handle - alcantara with hammer.



PRODUCT NUMBER	DIMENSIONS [MM]	IN PACKAGE
022214-LSH	140 (narrow)	20
022216-LSH	160 (narrow)	20
022218-LSH	180 (narrow)	20
022114-LSH	140 (wide)	20
022116-LSH	160 (wide)	20
022118-LSH	180 (wide)	20

Hardened spring welded steel blade. Natural leather handle - vintage with hammer.



PRODUCT NUMBER	DIMENSIONS [MM]	IN PACKAGE
022214-KH	140 (narrow)	20
022216-KH	160 (narrow)	20
022218-KH	180 (narrow)	20
022114-KH	140 (wide)	20
022116-KH	160 (wide)	20
022118-KH	180 (wide)	20

Hardened spring welded steel blade. Natural cork handle with hammer.



PRODUCT NUMBER	DIMENSIONS [MM]	IN PACKAGE
022214-2KH	140 (narrow)	20
022216-2KH	160 (narrow)	20
022218-2KH	180 (narrow)	20
022114-2KH	140 (wide)	20
022116-2KH	160 (wide)	20
022118-2KH	180 (wide)	20

Hardened spring welded steel blade. Two-component handle with hammer.

TRAPEZOID TROWELS



PRODUCT NUMBER	DIMENSIONS [MM]	IN PACKAGE
022214-L	140 (narrow)	20
022216-L	160 (narrow)	20
022218-L	180 (narrow)	20
022114-L	140 (wide)	20
022116-L	160 (wide)	20
022118-L	180 (wide)	20

Hardened spring welded steel blade. Natural leather handle.



PRODUCT NUMBER	DIMENSIONS [MM]	IN PACKAGE
022214-K	140 (narrow)	20
022216-K	160 (narrow)	20
022218-K	180 (narrow)	20
022114-K	140 (wide)	20
022116-K	160 (wide)	20
022118-K	180 (wide)	20

Hardened spring welded steel blade. Natural cork handle.



PRODUCT NUMBER	DIMENSIONS [MM]	IN PACKAGE
022214-2K	140 (narrow)	20
022216-2K	160 (narrow)	20
022218-2K	180 (narrow)	20
022114-2K	140 (wide)	20
022116-2K	160 (wide)	20
022118-2K	180 (wide)	20

Hardened spring welded steel blade. Two-component handle.



PRODUCT NUMBER	DIMENSIONS [MM]	IN PACKAGE
022214	140 (narrow)	20
022216	160 (narrow)	20
022218	180 (narrow)	20
022114	140 (wide)	20
022116	160 (wide)	20
022118	180 (wide)	20

Hardened spring welded steel blade. Wooden handle.

STAINLESS STEEL TRAPEZOID TROWELS - WITH HAMMER



PRODUCT NUMBER	DIMENSIONS [MM]	IN PACKAGE
122214S-LSSH	140 (narrow)	20
122216S-LSSH	160 (narrow)	20
122218S-LSSH	180 (narrow)	20
122114S-LSSH	140 (wide)	20
122116S-LSSH	160 (wide)	20
122118S-LSSH	180 (wide)	20

Hardened stainless steel welded steel blade. Natural leather handle - alcantara with hammer.



PRODUCT NUMBER	DIMENSIONS [MM]	IN PACKAGE
122214S-LSH	140 (narrow)	20
122216S-LSH	160 (narrow)	20
122218S-LSH	180 (narrow)	20
122114S-LSH	140 (wide)	20
122116S-LSH	160 (wide)	20
122118S-LSH	180 (wide)	20

Hardened stainless steel welded steel blade. Natural leather handle - vintage with hammer.



PRODUCT NUMBER	DIMENSIONS [MM]	IN PACKAGE
122214S-KH	140 (narrow)	20
122216S-KH	160 (narrow)	20
122218S-KH	180 (narrow)	20
122114S-KH	140 (wide)	20
122116S-KH	160 (wide)	20
122118S-KH	180 (wide)	20

Hardened stainless steel welded steel blade. Natural cork handle with hammer.



PRODUCT NUMBER	DIMENSIONS [MM]	IN PACKAGE
122214S-2K	140 (narrow)	20
122216S-2K	160 (narrow)	20
122218S-2K	180 (narrow)	20
122114S-2K	140 (wide)	20
122116S-2K	160 (wide)	20
122118S-2K	180 (wide)	20

Hardened stainless steel welded steel blade. Two-component handle with hammer.

STAINLESS STEEL TRAPEZOID TROWELS



PRODUCT NUMBER	DIMENSIONS [MM]	IN PACKAGE
122214S-L	140 (narrow)	20
122216S-L	160 (narrow)	20
122218S-L	180 (narrow)	20
122114S-L	140 (wide)	20
122116S-L	160 (wide)	20
122118S-L	180 (wide)	20

Hardened stainless steel welded steel blade. Natural leather handle.



PRODUCT NUMBER	DIMENSIONS [MM]	IN PACKAGE
122214S-K	140 (narrow)	20
122216S-K	160 (narrow)	20
122218S-K	180 (narrow)	20
122114S-K	140 (wide)	20
122116S-K	160 (wide)	20
122118S-K	180 (wide)	20

Hardened stainless steel welded steel blade. Natural cork handle.



PRODUCT NUMBER	DIMENSIONS [MM]	IN PACKAGE
122214S-2K	140 (narrow)	20
122216S-2K	160 (narrow)	20
122218S-2K	180 (narrow)	20
122114S-2K	140 (wide)	20
122116S-2K	160 (wide)	20
122118S-2K	180 (wide)	20

Hardened stainless steel welded steel blade. Two-component handle.



PRODUCT NUMBER	DIMENSIONS [MM]	IN PACKAGE
122214S	140 (narrow)	20
122216S	160 (narrow)	20
122218S	180 (narrow)	20
122114S	140 (wide)	20
122116S	160 (wide)	20
122118S	180 (wide)	20

Hardened stainless steel welded steel blade. Wooden handle.

STAINLESS STEEL TRAPEZOID TROWELS SPOT WELDED



PRODUCT NUMBER	DIMENSIONS [MM]	IN PACKAGE
122214-L	140 (narrow)	20
122216-L	160 (narrow)	20
122218-L	180 (narrow)	20
122114-L	140 (wide)	20
122116-L	160 (wide)	20
122118-L	180 (wide)	20

Stainless steel spot welded blade. Natural leather handle.



PRODUCT NUMBER	DIMENSIONS [MM]	IN PACKAGE
122214-K	140 (narrow)	20
122216-K	160 (narrow)	20
122218-K	180 (narrow)	20
122114-K	140 (wide)	20
122116-K	160 (wide)	20
122118-K	180 (wide)	20

Stainless steel spot welded blade. Natural cork handle.



PRODUCT NUMBER	DIMENSIONS [MM]	IN PACKAGE
122214-2K	140 (narrow)	20
122216-2K	160 (narrow)	20
122218-2K	180 (narrow)	20
122114-2K	140 (wide)	20
122116-2K	160 (wide)	20
122118-2K	180 (wide)	20

Stainless steel spot welded blade. Two-component handle.



PRODUCT NUMBER	DIMENSIONS [MM]	IN PACKAGE
122214	140 (narrow)	20
122216	160 (narrow)	20
122218	180 (narrow)	20
122114	140 (wide)	20
122116	160 (wide)	20
122118	180 (wide)	20

Stainless steel spot welded blade. Wooden handle.

SPRING STEEL WELDED TILERS SPATULA - WITH HAMMER



PRODUCT NUMBER	DIMENSIONS [MM]	IN PACKAGE
026140-LSSH	40	12
026160-LSSH	60	12
026180-LSSH	80	12
026100-LSSH	100	12
026112-LSSH	120	12

Hardened spring steel welded blade. Natural leather handle - alcantara with hammer.



PRODUCT NUMBER	DIMENSIONS [MM]	IN PACKAGE
026140-LSH	40	12
026160-LSH	60	12
026180-LSH	80	12
026100-LSH	100	12
026112-LSH	120	12

Hardened spring steel welded blade. Natural leather handle - vintage with hammer.



PRODUCT NUMBER	DIMENSIONS [MM]	IN PACKAGE
026140-KH	40	12
026160-KH	60	12
026180-KH	80	12
026100-KH	100	12
026112-KH	120	12

Hardened spring steel welded blade. Natural cork handle with hammer.



PRODUCT NUMBER	DIMENSIONS [MM]	IN PACKAGE
026140-2KH	40	12
026160-2KH	60	12
026180-2KH	80	12
026100-2KH	100	12
026112-2KH	120	12

Hardened spring steel welded blade. Two-component handle with hammer.

SPRING STEEL WELDED TILERS SPATULA



PRODUCT NUMBER	DIMENSIONS [MM]	IN PACKAGE
026140-L	40	12
026160-L	60	12
026180-L	80	12
026100-L	100	12
026112-L	120	12

Hardened spring steel welded blade. Natural leather handle.



PRODUCT NUMBER	DIMENSIONS [MM]	IN PACKAGE
026140-K	40	12
026160-K	60	12
026180-K	80	12
026100-K	100	12
026112-K	120	12

Hardened spring steel welded blade. Natural cork handle.



PRODUCT NUMBER	DIMENSIONS [MM]	IN PACKAGE
126140-2K	40	12
126160-2K	60	12
126180-2K	80	12
126100-2K	100	12
126112-2K	120	12

Hardened spring steel welded blade. Two-component handle.



PRODUCT NUMBER	DIMENSIONS [MM]	IN PACKAGE
026140	40	12
026160	60	12
026180	80	12
026100	100	12
026112	120	12

Hardened spring steel welded blade. Wooden handle.

STAINLESS STEEL WELDED TILERS SPATULA - WITH HAMMER



PRODUCT NUMBER	DIMENSIONS [MM]	IN PACKAGE
126140S-LSSH	40	12
126160S-LSSH	60	12
126180S-LSSH	80	12
126100S-LSSH	100	12
126112S-LSSH	120	12

Hardened stainless steel welded blade. Natural leather handle - alcantara with hammer.



PRODUCT NUMBER	DIMENSIONS [MM]	IN PACKAGE
126140S-LSH	40	12
126160S-LSH	60	12
126180S-LSH	80	12
126100S-LSH	100	12
126112S-LSH	120	12

Hardened stainless steel welded blade. Natural leather handle - vintage with hammer.



PRODUCT NUMBER	DIMENSIONS [MM]	IN PACKAGE
126140S-KH	40	12
126160S-KH	60	12
126180S-KH	80	12
126100S-KH	100	12
126112S-KH	120	12

Hardened stainless steel welded blade. Natural cork handle with hammer.



PRODUCT NUMBER	DIMENSIONS [MM]	IN PACKAGE
126140S-2KH	40	12
126160S-2KH	60	12
126180S-2KH	80	12
126100S-2KH	100	12
126112S-2KH	120	12

Hardened stainless steel welded blade. Two-component handle with hammer.

STAINLESS STEEL WELDED TILERS SPATULA



PRODUCT NUMBER	DIMENSIONS [MM]	IN PACKAGE
126140S-L	40	12
126160S-L	60	12
126180S-L	80	12
126100S-L	100	12
126112S-L	120	12

Hardened stainless steel welded blade. Natural leather handle.



PRODUCT NUMBER	DIMENSIONS [MM]	IN PACKAGE
126140S-K	40	12
126160S-K	60	12
126180S-K	80	12
126100S-K	100	12
126112S-K	120	12

Hardened stainless steel welded blade. Natural cork handle.



PRODUCT NUMBER	DIMENSIONS [MM]	IN PACKAGE
126140S-2K	40	12
126160S-2K	60	12
126180S-2K	80	12
126100S-2K	100	12
126112S-2K	120	12

Hardened stainless steel welded blade. Two-component.



PRODUCT NUMBER	DIMENSIONS [MM]	IN PACKAGE
126140S	40	12
126160S	60	12
126180S	80	12
126100S	100	12
126112S	120	12

Hardened stainless steel welded blade. Wooden handle.

STAINLESS STEEL SPOT WELDED TILERS SPATULA



PRODUCT NUMBER	DIMENSIONS [MM]	IN PACKAGE
126140-L	40	12
126160-L	60	12
126180-L	80	12
126100-L	100	12
126112-L	120	12

Stainless steel spot welded blade. Natural leather handle.



PRODUCT NUMBER	DIMENSIONS [MM]	IN PACKAGE
126140-K	40	12
126160-K	60	12
126180-K	80	12
126100-K	100	12
126112-K	120	12

Stainless steel spot welded blade. Natural cork handle.



PRODUCT NUMBER	DIMENSIONS [MM]	IN PACKAGE
126140-2K	40	12
126160-2K	60	12
126180-2K	80	12
126100-2K	100	12
126112-2K	120	12

Stainless steel spot welded blade. Two-component handle.



PRODUCT NUMBER	DIMENSIONS [MM]	IN PACKAGE
126140	40	12
126160	60	12
126180	80	12
126100	100	12
126112	120	12

Stainless steel spot welded blade. Wooden handle.

„CAT'S TONGUE” STAINLESS STEEL TROWELS



PRODUCT NUMBER	DIMENSIONS [MM]	IN PACKAGE
123214-L	140	12
123216-L	160	12

Stainless steel spot welded blade. Natural grinded leather handle.

PRODUCT NUMBER	DIMENSIONS [MM]	IN PACKAGE
123214-K	140	12
123216-K	160	12

Stainless steel spot welded blade. Natural cork handle.

PRODUCT NUMBER	DIMENSIONS [MM]	IN PACKAGE
123214-2K	140	12
123216-2K	160	12

Stainless steel spot welded blade. Two-component handle.

PRODUCT NUMBER	DIMENSIONS [MM]	IN PACKAGE
123214	140	12
123216	160	12

Stainless steel spot welded blade. Wooden handle.

HAMBURG STAINLESS STEEL TROWELS



PRODUCT NUMBER	DIMENSIONS [MM]	IN PACKAGE
126414-L	140	12
126416-L	160	12

Stainless steel spot welded blade. Natural grinded leather handle.

PRODUCT NUMBER	DIMENSIONS [MM]	IN PACKAGE
126414-K	140	12
126416-K	160	12

Stainless steel spot welded blade. Natural cork handle.

PRODUCT NUMBER	DIMENSIONS [MM]	IN PACKAGE
126414-2K	140	12
126416-2K	160	12

Stainless steel spot welded blade. Two-component handle.

PRODUCT NUMBER	DIMENSIONS [MM]	IN PACKAGE
126414	140	12
126416	160	12

Stainless steel spot welded blade. Wooden handle.

STUCCO STAINLESS STEEL TWO SIDED TROWELS



PRODUCT NUMBER	DIMENSIONS [MM]	IN PACKAGE
122508-L	80x90	12

Stainless steel spot welded blade. Natural leather handle.



PRODUCT NUMBER	DIMENSIONS [MM]	IN PACKAGE
122508-K	80x90	12

Stainless steel spot welded blade. Natural cork handle.



PRODUCT NUMBER	DIMENSIONS [MM]	IN PACKAGE
122508-2K	80x90	12

Stainless steel spot welded blade. Two-component handle.



PRODUCT NUMBER	DIMENSIONS [MM]	IN PACKAGE
122508	80x90	12

Stainless steel spot welded blade. Wooden handle.

OUTSIDE CORNER TROWEL



PRODUCT NUMBER	DIMENSIONS [MM]	IN PACKAGE
122604-L	60x80	12
122607-L	75x110	12

Stainless steel spot welded blade. Natural leather handle.



PRODUCT NUMBER	DIMENSIONS [MM]	IN PACKAGE
122604-K	60x80	12
122607-K	75x110	12

Stainless steel spot welded blade. Natural cork handle.



PRODUCT NUMBER	DIMENSIONS [MM]	IN PACKAGE
122604-2K	60x80	12
122607-2K	75x110	12

Stainless steel spot welded blade. Two-component handle.



PRODUCT NUMBER	DIMENSIONS [MM]	IN PACKAGE
122604	60x80	12
122607	75x110	12

Stainless steel spot welded blade. Wooden handle.

INSIDE CORNER TROWEL



PRODUCT NUMBER	DIMENSIONS [MM]	IN PACKAGE
122504-L	60x80	12
122507-L	75x110	12

Stainless steel spot welded blade. Natural leather handle.



PRODUCT NUMBER	DIMENSIONS [MM]	IN PACKAGE
122504-K	60x80	12
122507-K	75x110	12

Stainless steel spot welded blade. Natural cork handle.



PRODUCT NUMBER	DIMENSIONS [MM]	IN PACKAGE
122504-2K	60x80	12
122507-2K	75x110	12

Stainless steel spot welded blade. Two-component handle.



PRODUCT NUMBER	DIMENSIONS [MM]	IN PACKAGE
122504	60x80	12
122507	75x110	12

Stainless steel spot welded blade. Wooden handle.

JOIN POINTING TROWELS



PRODUCT NUMBER	DIMENSIONS [MM]	IN PACKAGE
025106-L	6	12
025108-L	8	12
025110-L	10	12
025112-L	12	12

Spring hardened steel blade. Natural leather handle.



PRODUCT NUMBER	DIMENSIONS [MM]	IN PACKAGE
025106-K	6	12
025108-K	8	12
025110-K	10	12
025112-K	12	12

Spring hardened steel blade. Natural cork handle.



PRODUCT NUMBER	DIMENSIONS [MM]	IN PACKAGE
025106-2K	6	12
025108-2K	8	12
025110-2K	10	12
025112-2K	12	12

Spring hardened steel blade. Two-component handle.



PRODUCT NUMBER	DIMENSIONS [MM]	IN PACKAGE
025106	6	12
025108	8	12
025110	10	12
025112	12	12

Spring hardened steel blade. Wooden handle.

POINTING SET



PRODUCT NUMBER	HANDLE	IN PACKAGE
205011-LSS	LEATHER ALCANTRA	5
205011-LS	LEATHER VINTAGE	5
205011-K	CORK	5
205011-2K	TWOCOMPONENT	5
205011	WOOD	5

Stainless steel grout float with spring hardened steel joint pointing.



PRODUCT NUMBER	HANDLE	IN PACKAGE
205011B-LSS	LEATHER ALCANTRA	5
205011B-LS	LEATHER VINTAGE	5
205011B-K	CORK	5
205011B-2K	TWOCOMPONENT	5
205011B	WOOD	5

Stainless steel grout float.

STAINLESS STEEL PAINT PUTTY KNIFE



PRODUCT NUMBER	DIMENSIONS [MM], HANDLE	IN PACKAGE
124015-LB	150, LEATHER	12
124015-KB	150, CORK	12
124015-2KB	150, TWOCOMPONENT	12

Stainless steel blade. Natural leather/cork/two-component handle with bit.

STAINLESS STEEL PAINT PUTTY KNIFE



PRODUCT NUMBER	DIMENSIONS [MM]	IN PACKAGE
124040-L	40	12
124060-L	60	12
124080-L	80	12
124010-L	100	12
124012-L	120	12
124015-L	150	12

Stainless steel blade. Natural leather handle.



PRODUCT NUMBER	DIMENSIONS [MM]	IN PACKAGE
124040-K	40	12
124060-K	60	12
124080-K	80	12
124010-K	100	12
124012-K	120	12
124015-K	150	12

Stainless steel blade. Natural cork handle.



PRODUCT NUMBER	DIMENSIONS [MM]	IN PACKAGE
124040-2KP	40	12
124060-2KP	60	12
124080-2KP	80	12
124010-2KP	100	12
124012-2KP	120	12
124015-2KP	150	12

Stainless steel blade. Two-component handle.

THREE-COMPONENT PUTTY KNIVES

PRODUCT NUMBER

124060-3K
124075-3K
124010-3K
124012-3K
124015-3K
124020-3K

DIMENSIONS [MM]

60x1,22 grind to 0,4
75x1,22 grind to 0,4
100x1,22 grind to 0,4
125x1,22 grind to 0,4
150x1,22 grind to 0,4
200x1,22 grind to 0,4

IN PACKAGE

10
10
10
10
10
10

Stainless Steel Putty Knife with an ergonomic three-component handle and flexible blade 1,22mm-0,4mm thick.



HAMMER MADE OF DURABLE ALUMINUM ALLOY

PERFECT FLEX BLADE MADE OF HARDENED STAINLESS STEEL

HOLE IN HAMMER THAT ALLOWS:

- HANG A TOOL
- PULL OUT NAILS

HANDLE MADE OF HIGH QUALITY RUBBER WITH ANTI-SLIP EFFECT



ONE-PIECE PUTTY KNIVES



PRODUCT NUMBER	DIMENSIONS [MM]	IN PACKAGE
124040-1	40x1,5 grind to 0,5	10
124050-1	50x1,5 grind to 0,5	10
124060-1	60x1,5 grind to 0,5	10
124080-1	80x1,5 grind to 0,5	10
124010-1	100x1,5 grind to 0,5	10
124013-1	130x1,5 grind to 0,5	10
124015-1	150x1,5 grind to 0,5	10
124020-1	200x1,5 grind to 0,5	10

One-Piece Stainless Steel Putty Knife with an ergonomic shape.



PRODUCT NUMBER	DIMENSIONS [MM]	IN PACKAGE
125120W-1	165x105x1,3	10

One-Piece Stainless Steel Bucket Scoop with curved blade.



PRODUCT NUMBER	DIMENSIONS [MM]	IN PACKAGE
1240100-1	80x2	10

One-Piece Stainless Steel "10-in-1" tool with a wide range of applications.

ONE-PIECE PUTTY KNIVES SET IN CASE

SET WERGMR-1 CONTAINS:
ONE-PIECE STAINLESS STEEL PUTTY KNIVES RANGING FROM 3" TO 8",
BUCKET SCOOP, AND A "10-IN-1" TOOL.



EXAMPLE PHOTO OF WERGMR-1

PRODUCT NUMBER	BLADE THICKNESS [MM]	IN PACKAGE
WERGMR	EMPTY RED SMALL CASE	1
WERGMR-1	ONE-PIECE PUTTY KNIVES SET	1

ABS FLOATS
SCRAPERS
SPIRIT LEVELS
BUCKETS



ABS FLOATS



PRODUCT NUMBER	DIMENSIONS [MM]	IN PACKAGE
205109-L	280x130x3	10

ABS Float natural leather handle.



PRODUCT NUMBER	DIMENSIONS [MM]	IN PACKAGE
205109-K	280x130x3	10

ABS Float natural cork handle.



PRODUCT NUMBER	DIMENSIONS [MM]	IN PACKAGE
205109-2K	280x130x3	10

ABS Float two-component handle.



PRODUCT NUMBER	DIMENSIONS [MM]	IN PACKAGE
205118	280x130x3	10
205109	280x130x2	10

ABS Float.



PRODUCT NUMBER	DIMENSIONS [MM]	IN PACKAGE
205211	127x279	10
205212	127x305	10

ABS Float.

SPONGE FLOATS



PRODUCT NUMBER	DIMENSIONS [MM]	IN PACKAGE
205111-2K	280x140x18	10

ABS float orange rubber sponge base.



PRODUCT NUMBER	DIMENSIONS [MM]	IN PACKAGE
205106-2K	280x140x25	10

ABS float hydro-sponge base non-cut-in. Two-component handle.



PRODUCT NUMBER	DIMENSIONS [MM]	IN PACKAGE
205107-2K	280x140x25	10

ABS float hydro-sponge base cut-in. Two-component handle.



PRODUCT NUMBER	DIMENSIONS [MM]	IN PACKAGE
205300-2K	280x140x25	10

ABS float orange hydro-sponge base. Two-component handle.



PRODUCT NUMBER	DIMENSIONS [MM]	IN PACKAGE
205301-2K	280x140x25	10

ABS float yellow hydro-sponge base. Two-component handle.



PRODUCT NUMBER	DIMENSIONS [MM]	IN PACKAGE
205116-2K	280x140x25	10

ABS float brown hydro-sponge base non-cut-in. Two-component handle.



PRODUCT NUMBER	DIMENSIONS [MM]	IN PACKAGE
205117-2K	280x140x25	10

ABS float brown hydro-sponge base cut-in. Two-component handle.



PRODUCT NUMBER	DIMENSIONS [MM]	IN PACKAGE
205115-2K	280x140x8	10

ABS float black rubber base. Two-component handle.

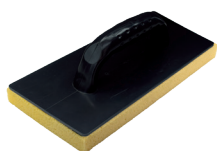


PRODUCT NUMBER	DIMENSIONS [MM]	IN PACKAGE
205123-2K	280x140x8	10

ABS float white felt base. Two-component handle.

PRODUCT NUMBER	DIMENSIONS [MM]	IN PACKAGE
205005-2K	250x100	10

ABS float red rubber base. Two-component handle.



PRODUCT NUMBER	DIMENSIONS [MM]	IN PACKAGE
205107	280x140	10

ABS float hydro-sponge base cut-in.



PRODUCT NUMBER	DIMENSIONS [MM]	IN PACKAGE
205106	280x140x25	10

ABS float hydro-sponge base non-cut-in.



PRODUCT NUMBER	DIMENSIONS [MM]	IN PACKAGE
205111	280x140x18	5
205112	280x140x12	5

ABS float orange rubber sponge base.



PRODUCT NUMBER	DIMENSIONS [MM]	IN PACKAGE
205117	280x140	10

ABS float brown hydro-sponge base cut-in.



PRODUCT NUMBER	DIMENSIONS [MM]	IN PACKAGE
205116	280x140	10

ABS float brown hydro-sponge base cut-in.



PRODUCT NUMBER	DIMENSIONS [MM]	IN PACKAGE
205115	280x140x8	10

ABS float black foam base.



PRODUCT NUMBER	DIMENSIONS [MM]	IN PACKAGE
205123	280x140x8	10

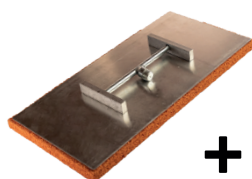
ABS float base white felt.

ARTICULATED SPONGE



PRODUCT NUMBER	DIMENSIONS [MM]	IN PACKAGE
205111G	280x140x18	24
205003G	400x200x18	24

Orange rubber sponge.

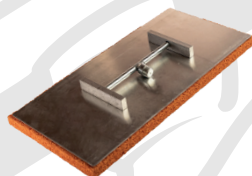


+



PRODUCT NUMBER	DIMENSIONS [MM]	IN PACKAGE
205003	stick - 130 sponge - 200x400x18	10

Aluminium float with orange rubber sponge. Includes: Aluminium plate with nut, orange rubber sponge and stick 205003T.



PRODUCT NUMBER	DIMENSIONS [MM]	IN PACKAGE
205003-1	200x400x18	10

Aluminium float with orange rubber sponge.



PRODUCT NUMBER	DIMENSIONS [MM]	IN PACKAGE
205003T	130	10

Wooden stick with nut.

STYROFOAM & POLIURETHANE FLOAT



PRODUCT NUMBER	DIMENSIONS [MM]	IN PACKAGE
ST14280	130x270	10
ST18320	180x320	10
ST14500	140x500	10
ST14700	140x700	10
ST141000	140x1000	10

Styrofoam float.



PRODUCT NUMBER	DIMENSIONS [MM]	IN PACKAGE
PU141234	140x120x340	10

Polyurethane trapezoidal float.



PRODUCT NUMBER	DIMENSIONS [MM]	IN PACKAGE
PU1280	120x180	10
PU1270	120x700	10
PU12100	120x1000	10
PU12120	120x1200	10
PU1160	110x600	10
PU2242	220x420	10
PU1219	120x190	10
PU1224	120x240	10
PU1428	140x280	10
PU1832	180x320	10

Polyurethane float.

SCRAPERS | DILATATION SAW



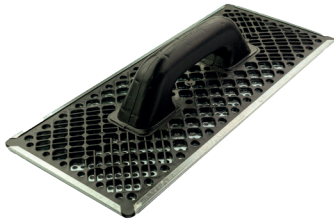
PRODUCT NUMBER	DIMENSIONS [MM]	IN PACKAGE
205300	320	5

Dilatation saw.



PRODUCT NUMBER	DIMENSIONS [MM]	IN PACKAGE
205271-2K	130x270	10
205380-2K	160x380	10

Scraper for styrofoam, two-component handle.



PRODUCT NUMBER	DIMENSIONS [MM]	IN PACKAGE
205271	130x270	10
205380	160x380	10

Scraper for styrofoam.



PRODUCT NUMBER	DIMENSIONS [MM]	IN PACKAGE
205002	450	5

Wall scraper.



PRODUCT NUMBER	DIMENSIONS [MM]	IN PACKAGE
285040-2K	250x290	5

Steel plaster truss two-component handle.



PRODUCT NUMBER	DIMENSIONS [MM]	IN PACKAGE
127830 (without stick)	300	10

Floor scraper.



PRODUCT NUMBER	DIMENSIONS [MM]	IN PACKAGE
127831	1400	10

Wooden stick.

MIXING TUBS AND BUCKETS



PRODUCT NUMBER	CAPACITY [L]	IN PACKAGE
PJ40	40	5
PJ60	60	5
PJ90	90	5

Rounded mixing tub.



PRODUCT NUMBER	CAPACITY [L]	IN PACKAGE
KS40	45	5
KS60	65	5
KS90	90	5

Mixing tub.



PRODUCT NUMBER	CAPACITY [L]	IN PACKAGE
WD12	12	5
WD16	16	5
WD20	20	5

Builders bucket.



PRODUCT NUMBER	CAPACITY [L]	IN PACKAGE
WDD12	12	5
WDD16	16	5
WDD20	20	5

Builders bucket with pouring spout.

TILLERS KITS



PRODUCT NUMBER	IN PACKAGE
ZGP	1

Set contains: bucket 22L, grill, rollers.



PRODUCT NUMBER	IN PACKAGE
ZGPI	1

Set contains: bucket 22L, grill, rollers, 205117, 205005-2K.



PRODUCT NUMBER	IN PACKAGE
ZGPII	1

Set contains: bucket 22L, grill, rollers, 205115, 205117.



PRODUCT NUMBER	IN PACKAGE
ZGPIII	1

Set contains: bucket 22L, grill, rollers, 205117, 205005-2K, 026180, 127128E8.



PRODUCT NUMBER	IN PACKAGE
ZGPIV	1

Set contains: bucket 22L, grill, rollers, 205117, 205005-2K, 026180, 127128-FRD.

SPIRIT LEVELS



PRODUCT NUMBER	DIMENSIONS [MM]	IN PACKAGE
LAGE2M40	400	5
LAGE2M50	500	5
LAGE2M60	600	5
LAGE2M80	800	5
LAGE2M100	1000	5
LAGE2M120	1200	5
LAGE2M150	1500	5
LAGE2M200	2000	5

Red aluminium spirit level.



PRODUCT NUMBER	DIMENSIONS [MM]	IN PACKAGE
LAGE2M40S	400	5
LAGE2M60S	600	5
LAGE2M80S	800	5
LAGE2M100S	1000	5
LAGE2M120S	1200	5
LAGE2M150S	1500	5
LAGE2M200S	2000	5

Silver anodized aluminium spirit level.



PRODUCT NUMBER	DIMENSIONS [MM]	IN PACKAGE
LAGE3M40PM	400	3
LAGE3M60PM	600	3
LAGE3M80PM	800	3
LAGE3M100PM	1000	3
LAGE3M120PM	1200	3
LAGE3M150PM	1500	3
LAGE3M200PM	2000	3

Power max strengthened aluminium spirit level.

SCREEDING RULER



PRODUCT NUMBER	DIMENSIONS [MM]	IN PACKAGE
Z902LBR150	1500	10
Z902LBR200	2000	10
Z902LBR250	2500	10
Z902LBR300	3000	10

Aluminium screeding ruler. 2 vials, without holders.



PRODUCT NUMBER	DIMENSIONS [MM]	IN PACKAGE
Z902L2R150	1500	10
Z902L2R200	2000	10
Z902L2R250	2500	10
Z902L2R300	3000	10

Aluminium screeding ruler. 2 vials, with holders.



PRODUCT NUMBER	DIMENSIONS [MM]	IN PACKAGE
Z904L2R150	1500	10
Z904L2R200	2000	10
Z904L2R250	2500	10
Z904L2R300	3000	10

Aluminium screeding ruler. 4 vials, with holders.



PRODUCT NUMBER	DIMENSIONS [MM]	IN PACKAGE
Z904LBR150	1500	10
Z904LBR200	2000	10
Z904LBR250	2500	10
Z904LBR300	3000	10

Aluminium screeding ruler. 4 vials, without holders.

SCREEDING LEVELS



PRODUCT NUMBER	DIMENSIONS [MM]	IN PACKAGE
Z80T1L100	1000	10
Z80T1L150	1500	10
Z80T1L200	2000	10
Z80T1L250	2500	10
Z80T1L300	3000	10

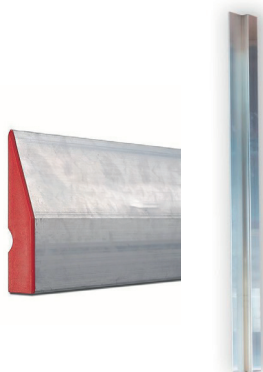
Aluminium screeding ruler. 1 vial, without holders.



PRODUCT NUMBER	DIMENSIONS [MM]	IN PACKAGE
Z80T1L100AT	1000	10
Z80T1L150AT	1500	10
Z80T1L200AT	2000	10
Z80T1L250AT	2500	10

Aluminium screeding ruler. 4 vials, with holders.

TRAPEZOIDAL AND H-TYPE RULER



PRODUCT NUMBER	DIMENSIONS [MM]	IN PACKAGE
ZTE100	1000	10
ZTE150	1500	10
ZTE180	1800	10
ZTE200	2000	10
ZTE250	2500	10
ZTE300	3000	10

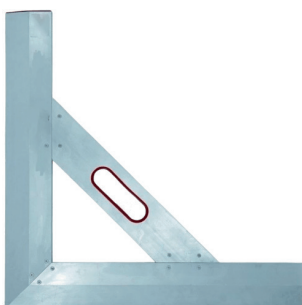
Aluminium trapezoidal ruler.



PRODUCT NUMBER	DIMENSIONS [MM]	IN PACKAGE
ZH100	1000	10
ZH150	1500	10
ZH200	2000	10
ZH250	2500	10
ZH300	3000	10

Aluminium h-type ruler.

TRIANGLE TEMPLATE



PRODUCT NUMBER	DIMENSIONS [MM]	IN PACKAGE
ZTEKO60	600x600	5

Aluminium triangle template.

SPIKE ROLLERS



PRODUCT NUMBER	DIMENSIONS [MM]	IN PACKAGE
SR11250	11 X 250	1
SR11500	11 X 500	1
SR11750	11 X 750	1
SR13250	13 X 250	1
SR13500	13 X 500	1
SR13750	14 X 750	1

Spike height 11/13mm.

SPIKE SHOES



PRODUCT NUMBER	IN PACKAGE
SPIKESHOES Spike shoes	1

LONG KNEE PADS



PRODUCT NUMBER	IN PACKAGE
KNEEPADS Long knee pads.	1

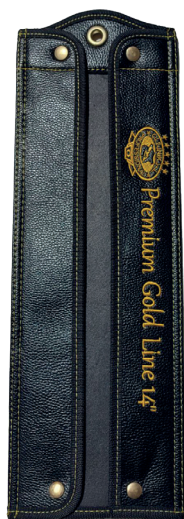
BUCKET SCOOP



PRODUCT NUMBER	DIMENSIONS [MM]	IN PACKAGE
BS8090180	80 (WYSOKOŚĆ) ,90	1

Bucket scoop.

LEATHER COVER FOR TROWELS



PRODUCT NUMBER	DIMENSIONS [IN]	IN PACKAGE
COVER11-PGL	11	1
COVER12-PGL	12	1
COVER14-PGL	14	1
COVER16-PGL	16	1
COVER18-PGL	18	1

Leather cover for trowel.



FILLING AGGREGATE KALETA-152 / 152 ECO

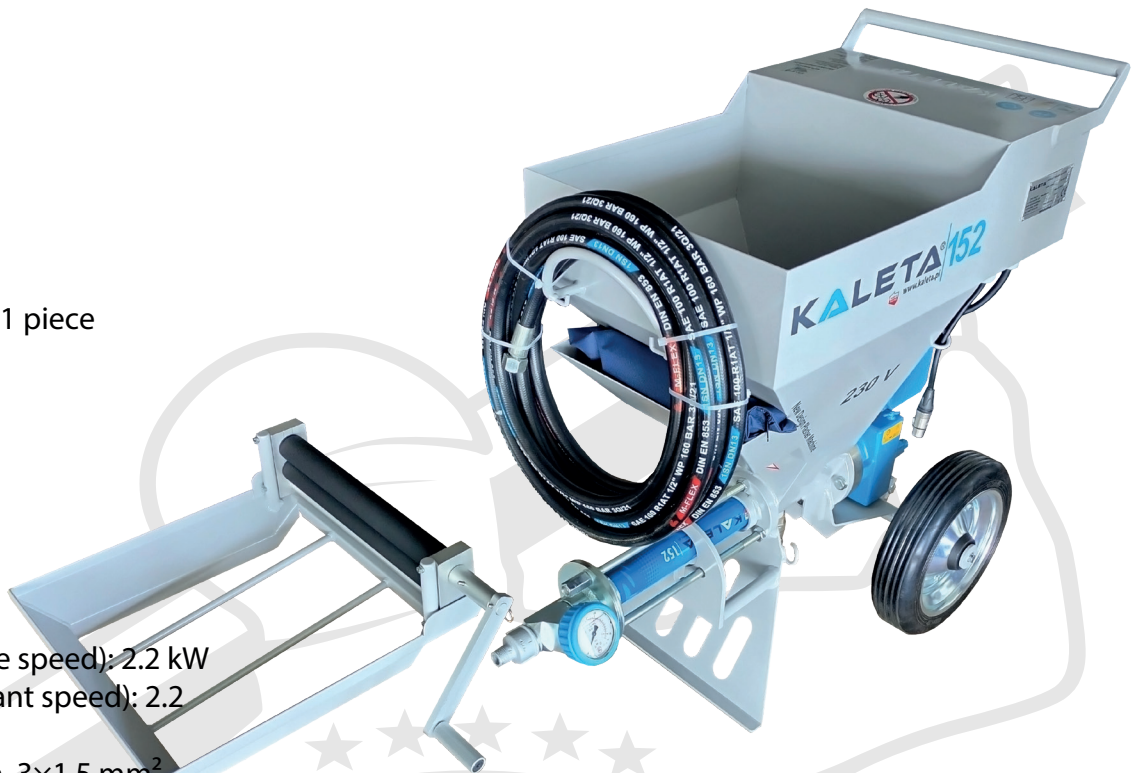
Equipment

- Trolley set: 1 piece
- Control panel: 1 piece
- Mortar hose 20 1×9 m
- Spraying gun: 1 piece
- Wom pump: 1 set
- Cleaning ball: 1 piece
- Open ended spanner: 1 piece
- Control duct 1×10 m
- OOM: 1 piece

Technical characteristics

- Voltage: 230V/50 Hz
- Engine power (variable speed): 2.2 kW
- *Engine power (constant speed): 2.2 kW
- Connection cable: min. 3×1.5 mm²
- Max output: 6 l/min
- Max forcing pressure: 100 bar
- Dimensions: 900x520x860 mm
- Basket capacity: 57 liters
- Weight: 85 kg

*parameters for the Kaleta-152 eco unit



PRODUCT NUMBER	DIMENSIONS [MM]	IN PACKAGE
K152	900x520x860	1

Small, compact and universal aggregate KALETA-152 without air system, with single-phase 230V power supply. It is designed for work with puttying compounds, leveling compounds, gypsum finish coats, etc. Used for all kinds of ready-to-use materials: putty coat, smoothing coat, complementary coat, protective coat, bitumen coat.



ZPH ZOLWRO-BAUMEISTER SP. Z O.O.
Wojska Polskiego 67/69,
56-400 Oleśnica
TAX NUMBER: PL8982026754
www.zolwro.pl